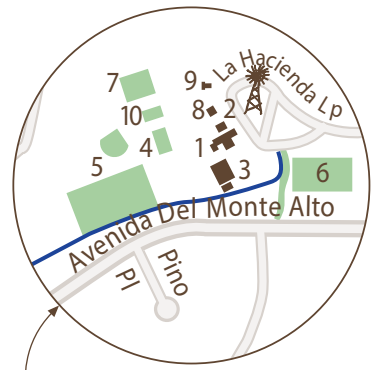
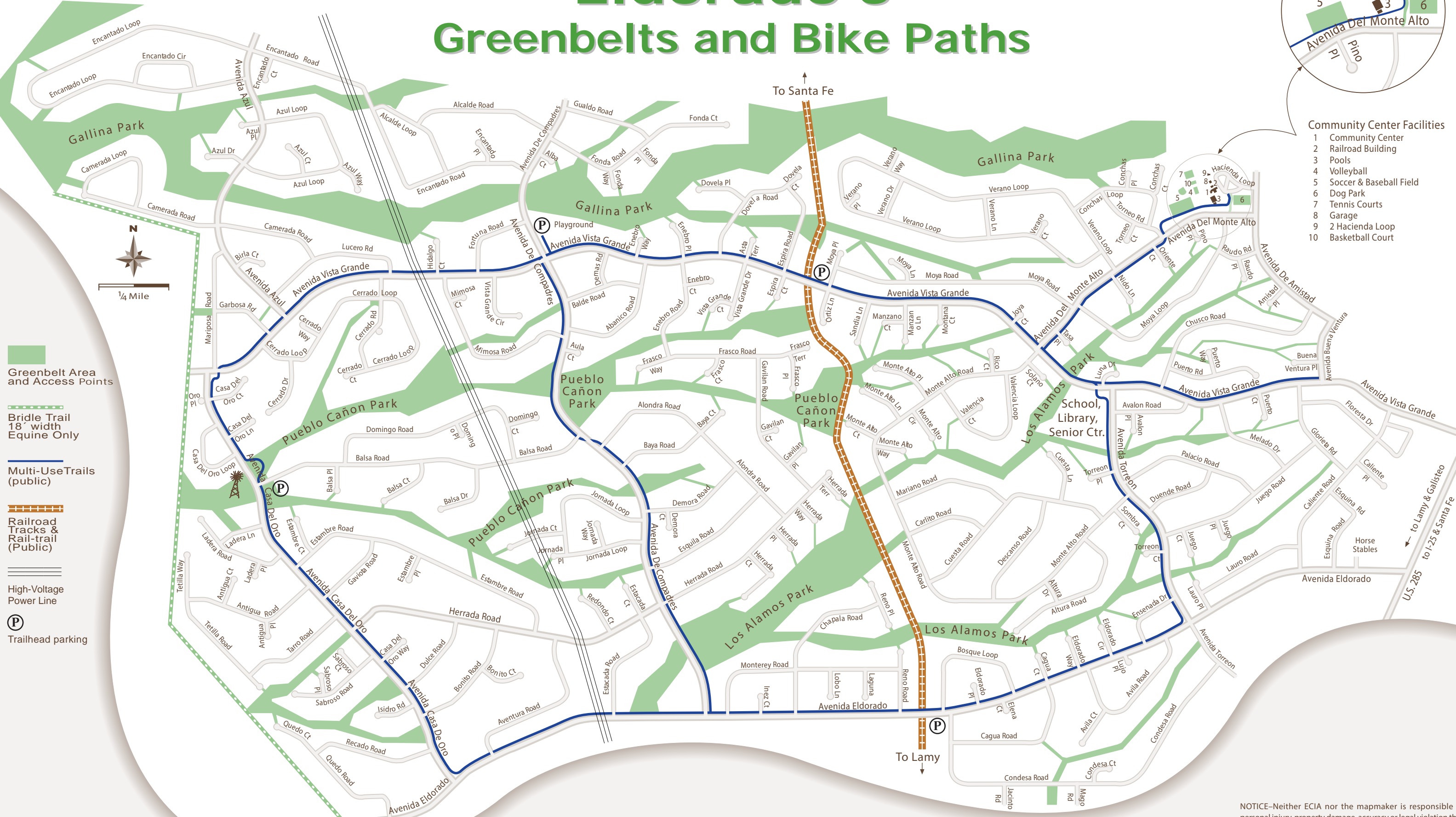


Eldorado's Greenbelts and Bike Paths



- Community Center Facilities**
- 1 Community Center
 - 2 Railroad Building
 - 3 Pools
 - 4 Volleyball
 - 5 Soccer & Baseball Field
 - 6 Dog Park
 - 7 Tennis Courts
 - 8 Garage
 - 9 2 Hacienda Loop
 - 10 Basketball Court



- Greenbelt Area and Access Points
- Bridle Trail 18' width Equine Only
- Multi-Use Trails (public)
- Railroad Tracks & Rail-trail (Public)
- High-Voltage Power Line
- Trailhead parking



Eldorado's Greenbelts & Bike Paths



Guide & Map

Rev. 2014

Regulations for Use

- While walking is the primary greenbelt activity, horses and bicycles are allowed.
- No motorized vehicles are allowed, including ATVs.
- Dogs shall be leashed when in the greenbelt, as per ECIA Board policy.
- Dog owners shall clean up waste.
- Cyclists must slow or stop when meeting equestrians or hikers; hikers must step aside for horses.
- Fires and smoking are not allowed due to fire danger.
- Dumping of any plant material or other refuse is not allowed.
- Plants, animals, minerals and artifacts are not to be disturbed or collected.
- Erecting tents, nets, playhouses, or other recreational equipment is not allowed.
- Guests are permitted as long as an ECIA member accompanies them.
- Use only designated access points (or your own property border). Do not cut across other lots, even vacant ones.

Keep our greenbelts as scenic
buffers for all to enjoy.

2.5M 2014

Using This Guide and Map

The map shows access points to greenbelts. Please use these for entry. Most access points are not marked. If you have questions about access points, review your plat or call the ECIA office.

Eldorado is fortunate to have 5,000 acres of open space set aside for our community's use. We must preserve and protect these amenities as growth and development continue.

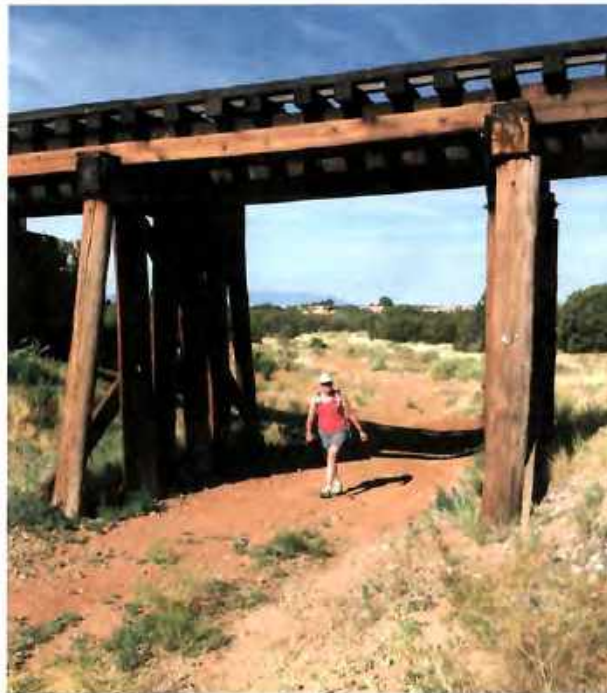
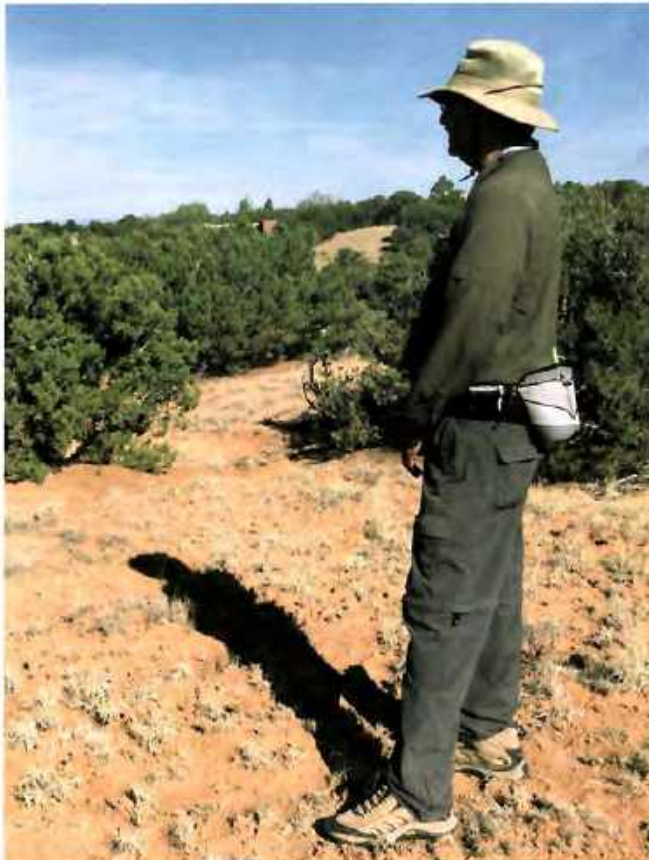


Published by the
Eldorado Community Improvement Assn.
1 Hacienda Loop
Santa Fe, New Mexico 87508
505-466-4248
eldoradosf.org

Eldorado's Greenbelts – History

Eldorado is blessed with greenbelts winding throughout the community, which add much to our feeling of living in wide-open spaces. They provide recreation and serve as flood protection. The developer, AMREP, was required to designate flood plains and drainage easements when platting the subdivision in 1972 as a Planned Unit Development (PUD). Additional drainage, walkway, and bridle path easements were also platted. These are our greenbelts today, and are one of the community's major assets.

The greenbelts total 987 acres. ECIA purchased 130 acres from Rational Alternatives, Inc in 1988. AMREP transferred 857 acres to ECIA in 1996.



ECIA members collectively own the greenbelts. The greenbelts are managed by the ECIA Board of Directors, with the Conservation Committee providing oversight and recommendations.

The policies include guidelines for ECIA management of the greenbelts to protect their values for homeowners and provide a safe environment for the residents.

Management activities include:

- Clearing overgrown paths
- Marking access points
- Fire danger reduction
- Erosion control
- Trailhead signage
- Trail realignment and improvement

Railroad Path and Power Line Interface.

The railroad right-of-way, part of the county Rails-To-Trails system, is open to the public and connects to several of our greenbelts. The PNM high line easement (100-ft.) is owned by ECIA and crosses several greenbelts and roads.



The Ranch Windmills

Windmills are symbolic of the ranching history from which Eldorado evolved. Many existed on the Simpson Ranch before it was split into several subdivisions. The two windmills left in Eldorado are located at the community center, and in the greenbelt west of Avenida Casa del Oro. The latter bears a 1914 date on the old wellhead.