



# ECIA Road Committee Presentaion to ECIA Board Meeting 2020-06-15

- HOW WE GOT HERE
- WHAT WE HAVE DONE
- WHAT IS AHEAD

# HOW WE GOT HERE.

- ▶ First meeting with current committee: The current RC re-started on November 13, 2019.
- ▶ Meetings have been held the first Wednesday of every month.
- ▶ Current members: James A. Mason (chair), Amelia Adair (sect.), Paul Ingrahm, Art Kaiser
- ▶ Board Liaison: Mel D'Amore (VP)

# HOW WE GOT HERE.

## GOALS for the ECIA ROAD COMMITTEE – 2020-2024 (2019-07-19).

1. Correlation of **poor road performance** with slope of road, soil type, and local drainage features.
2. **Air sampling** of various Road Types.
3. **Drainage Basin** Development as part of **Rainwater Runoff Capture**.
4. **Community Training** about Culverts and Ditches and Assessment of Ground Surface Rainwater Run-off.
5. **Develop new working relationship with new Director** of Santa Fe County Roads Division.



WHAT WE HAVE DONE.

ROAD MAINTENANCE





Ruler

Line Path Polygon Circle 3D path 3D polygon

Measure the distance between multiple points on the ground

Length: 0.62 Miles

☒ Show Elevation Profile

☒ Mouse Navigation

Save Clear

Mimosa Road  
ADT = 102  
n = 25  
ADT/n = 4









WHAT WE HAVE DONE.

PAVED ROAD.

## ROADS SUGGESTED BY SF COUNTY for REPAIR in ELDORADO

- CAMERADA ROAD
- CAMERADA LOOP
- ENCANTADO ROAD
- ENCANTADO CIRCLE
- CERRADO LOOP

## ROADS SUGGESTED for REPAIR by ECIA Road COMMITTEE

- CAMERADA ROAD
- CAMERADA LOOP
- ENCANTADO ROAD
- ENCANTADO CIRCLE
- CERRADO LOOP
- Balsa COURT
- DOMINGO ROAD
- MIMOSA ROAD
- RAP ROADS



On Friday April 24 the Road Committee met with Diego Gomez, P.E., Santa Fe County Public Works, Projects Engineer. The #1 priority arising out of this meeting is the need to encumber \$150,000 in State grant funding for Eldorado road improvements. Given the current public health and economic crisis, this funding is at high risk of being reallocated. In order to preserve this funding, Mr. Gomez recommends making a decision as soon as possible, so that he can take action before the end of April to encumber the funding and preserve it for use in Eldorado.

	Road Name	Average Daily Traffic (ADT)	Number of homes along length of road	ADT / Group Total of Homes						
	Camerada Road	136	20	7						
	Camerada Loop		20		Cerrado rd.	8	Cerrado Group total =		63	
	Encantado Circle		15		Cerrado Dr.	11				
	Cerrado Loop	218	39	3	Cerrado Ct.	5				
	Estacada Road	109	19	6						
	Mimosa Road	102	25	4	Mimosa Ct.	3	Mimosa group total =		28	
	Espira	221	9	10						
	Dovela	90	18		Dovela + Dovela Place + Espira group =				32	
	Dovel Court		5							
	Balsa Court		9							
	Domingo Road	157	30	4	Domingo Pl.	4	Domingo group =		41	
	Fortuna Road	38	14		Domingo Ct	7				
	Estambra Court		9							
	Encantado Road	879	43	10	Encantado + Alcalde Group =				88	
	Encantado Court		1							
	Encantado Place		7							
	Alcalde Loop		9							
	Alcalde Road		28							



## Cerrado Loop

ADT = 218

$n = 63$

$ADT/n = 3$

Ruler

Line Path Polygon Circle 3D path 3D polygon

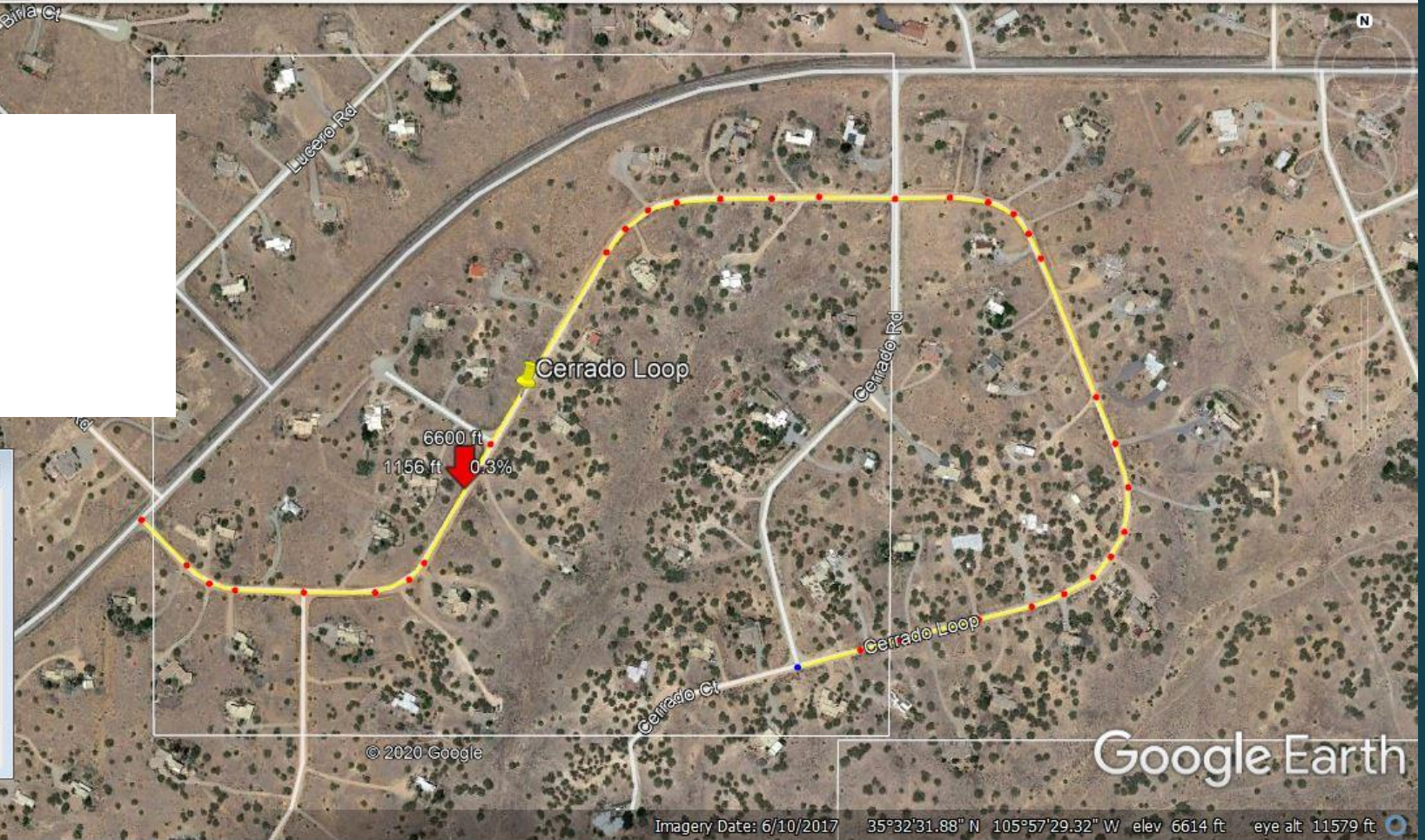
Measure the distance between multiple points on the ground

Length: 0.98 Miles

☒ Show Elevation Profile

☒ Mouse Navigation

Save Clear



Graph: Min. Avg. Max Elevation: 6600, 6622, 6651 ft  
Range Totals: Distance: 0.98 mi Elev Gain/Loss: 66.8 ft, -59.8 ft Max Slope: 9.4%, -8.7% Avg Slope: 2.4%, -2.2%





WHAT WE HAVE DONE.

CHIP SEAL RAP PAVED ROAD.



# RAP ROADS

- Carlito Road = 1540'
- Chusco Road = 3830'
- Demora Road = 1930'
- Estambre Road = 5424'
- Glorieta Road = 2013'
- Juego Road = 3368'

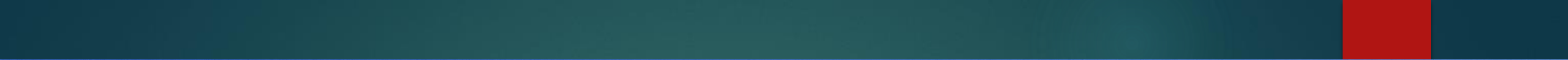


# RAP ROADS

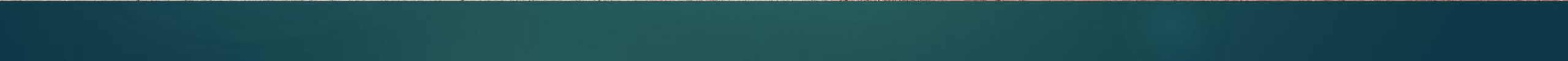
- All RAP roads will receive a “chip seal” surfacing about 1-1/2” thick.
- This will begin in late May.
- RAP roads will then be on a 2-3 year cycle for application of another chip seal, thus improving the drivability of the surface.

































Ruler

Line Path Polygon Circle 3D path 3D polygon

Measure the distance between multiple points on the ground

Length: 3,828.30 Feet

☒ Show Elevation Profile

☒ Mouse Navigation

Save Clear

# Chusco Road



Graph: Min, Avg, Max Elevation: 6891, 6928, 6973 ft

Range Totals: Distance: 0.73 mi Elev Gain/Loss: 97.7 ft, -26.9 ft Max Slope: 9.8%, -12.5% Avg Slope: 3.2%, -2.4%



















WHAT IS AHEAD ?

# WHAT IS AHEAD

1. Correlation of **poor road performance** with slope of road, soil type, and local drainage features.
2. **Air sampling** of various Road Types (w/ Los Alamos NL).
3. **Drainage Basin** Development as part of **Rainwater Runoff Capture**.
4. **Community Training** about Culverts and Ditches.
5. **Survey equipment** to help County with drainage ditch designs and map out infrastructure. Also, the County needs help with determining property corners for their grading work. Cost for survey equipment is about \$12,000.