

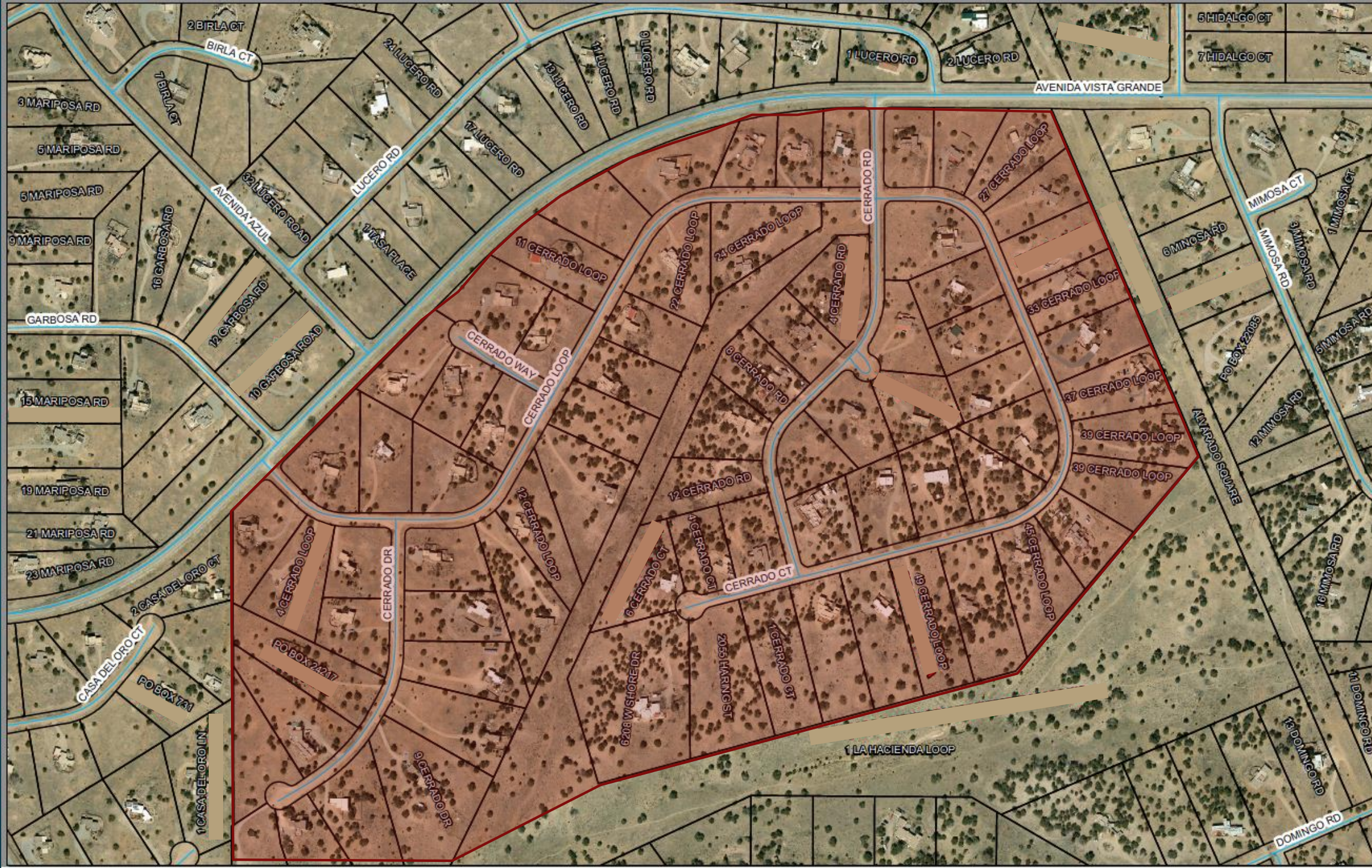


CERRADO LOOP Community Meeting April 5, 2021

*Assessment & Decision
Making Process*
by the ECIA ROAD COMMITTEE

HISTORY OF CERRADO LOOP PROJECT.

ELDORADO ROADS LIST, CAPITAL REQUESTS &
COLLABORATION WITH SF COUNTY.



Cerrado Loop paving as a topic of discussion for the ECIA Board and the Road Committee

- ▶ Discussion about the use of the \$150K grant monies began in February 2020.
- ▶ The RC has had direct communication with the SFDPW since March 2020.
- ▶ The RC has conducted rigorous and scientific investigation of numerous roads in Eldorado to determine the most appropriate candidate.
- ▶ There have been numerous eBlasts and Vistas articles documenting both process and dates of actions.

On **Friday April 24, 2020** the Road Committee met with Diego Gomez, P.E., Santa Fe County Public Works, Projects Engineer. **The #1 priority arising out of this meeting was the need to encumber \$150,000 in State grant funding for Eldorado road improvements.** Given the current public health and economic crisis, **this funding was at high risk of being reallocated.** In order to preserve this funding, Mr. Gomez recommended **making a decision as soon as possible**, so that he could **take action before the end of April 2020** to encumber the funding and preserve it for use in Eldorado.

ROADS SUGGESTED BY SF COUNTY for REPAIR in ELDORADO

- CAMERADA ROAD
- CAMERADA LOOP
- ENCANTADO ROAD
- ENCANTADO CIRCLE
- **CERRADO LOOP**



ROADS SUGGESTED for REPAIR by ECIA Road COMMITTEE

- CAMERADA ROAD
- CAMERADA LOOP
- ENCANTADO ROAD
- ENCANTADO CIRCLE
- **CERRADO LOOP**
- Balsa COURT
- DOMINGO ROAD
- MIMOSA ROAD
- RAP ROADS

	Road Name	Average Daily Traffic (ADT)	Number of homes along length of road	ADT / Group Total of Homes						
	Camerada Road	136	20	7						
	Camerada Loop		20		Cerrado rd.	8	Cerrado Group total =		63	
	Encantado Circle		15		Cerrado Dr.	11				
	Cerrado Loop	218	39	3	Cerrado Ct.	5				
	Estacada Road	109	19	6						
	Mimosa Road	102	25	4	Mimosa Ct.	3	Mimosa group total =		28	
	Espira	221	9	10						
	Dovela	90	18		Dovela + Dovela Place + Espira group =				32	
	Dovel Court		5							
	Balsa Court		9							
	Domingo Road	157	30	4	Domingo Pl.	4	Domingo group =		41	
	Fortuna Road	38	14		Domingo Ct	7				
	Estambra Court		9							
	Encantado Road	879	43	10	Encantado + Alcalde Group =				88	
	Encantado Court		1							
	Encantado Place		7							
	Alcalde Loop		9							
	Alcalde Road		28							

Cerrado Loop

ADT = 218

$n = 63$

$ADT/n = 3$

Ruler

Line Path Polygon Circle 3D path 3D polygon

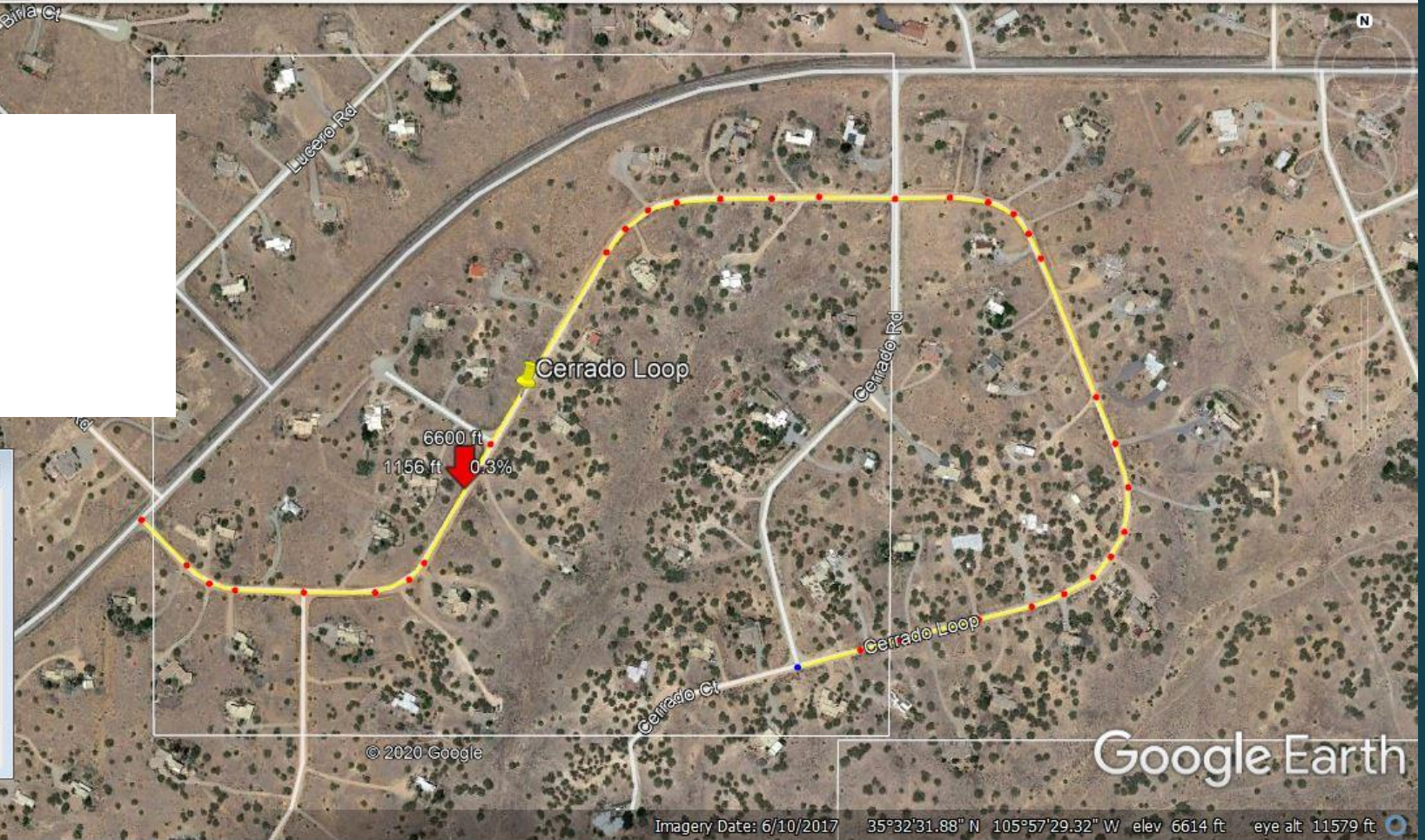
Measure the distance between multiple points on the ground

Length: 0.98 Miles

☒ Show Elevation Profile

☒ Mouse Navigation

Save Clear




Graph: Min. Avg. Max Elevation: 6600, 6622, 6651 ft
Range Totals: Distance: 0.98 mi Elev Gain/Loss: 66.8 ft, -59.8 ft Max Slope: 9.4%, -8.7% Avg Slope: 2.4%, -2.2%



Why Cerrado Loop?

- Summary: It has the **second highest average daily traffic count (“ADT”) in Eldorado**, but it is the most “**shovel-ready**” (they recently graded the road and bladed the roadside ditches), enabling us to get more paving for the money than the other potential paving choice. Also, there are **63 homes** that have either direct or indirect access and usage of this particular road on a daily basis. This is well above other roads that were considered for paving. That is, **there is a larger distribution of funds to more people with Cerrado Loop getting paved.**

A key criteria for the County in deciding whether to upgrade a road to asphalt is whether the cost to pave is lower than the cost to maintain with another kind of surface over time. The analysis typically covers several decades. Cerrado Loop meets that criteria (as does Encantado Road and Loop, but it's a much bigger project). Other roads in Eldorado which have high maintenance costs have lower ADTs, so would be lower on the priority scale.

- 
- Cerrado Loop has a wider profile and more existing culverts, and fewer drainage problems, to be resolved than Encantado Road. Therefore, Mr. Gomez believed the County could afford to pave all of Cerrado Loop plus the connection of Cerrado Drive to Vista Grande, just over a mile.