

# ELDORADO COMMUNITY STABLE 2021 ANNUAL MEETING

- Summary of last annual meeting & community survey results
- Highlights of ESC achievements in 2021
- ESC Plans for 2022 and budget overview
- Volunteer recognition
- Feedback for ESC goals & priorities for 2022

# HERE'S WHAT YOU SAID...

## STABLE COMMUNITY SURVEY – FEBRUARY 2021

- 25 Surveys Completed

If you could make one change at the Eldorado Community Stable, what would it be?



Category	# of Responses
Manure Bins	
Remove	1
Move one closer to me	1
Communication	
More direct communication among users, etiquette	2
Put things back that you move	1
Electricity	2
Footings – dust free in lower arena	1
Nothing	2
Turnout	
More turnout areas	4
Move lessons to upper arena to allow more turnout in lower	1
Obstacles	
Eliminate jumps from upper	2
Use arroyo arena for jumps	1
Take obstacles down when not in use or schedule a few days a week only	2
Improve access to Eldorado Preserve	1
Covered Arena	1

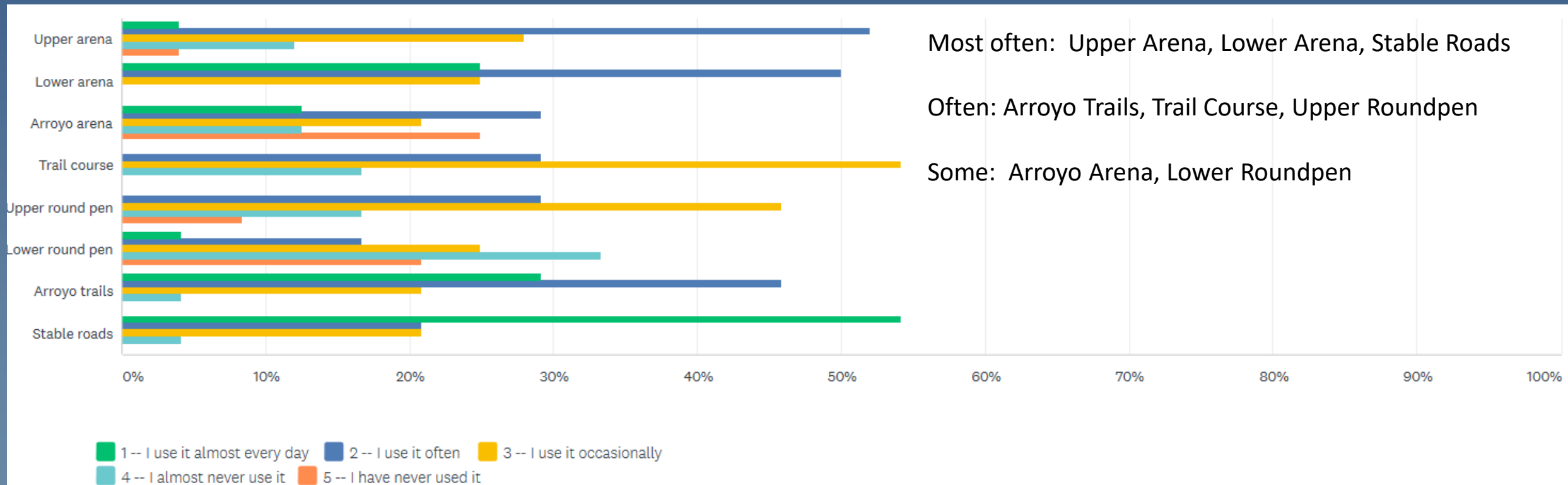
For the amenities you use or plan to use the most in the coming year, please describe how you plan to use those amenities.

Category	# of responses
Upper Arena	
Ride	17
Obstacles/Elements/Jumps	4
Lunge/Groundwork	4
Upper Roundpen	
Lunge/Groundwork	5
General	4
Turnout	3
Ride	1
Never use	1
Trail Course	
General	6
Groundwork	4
Ride	1
Lower Arena	
Turnout	22
Riding	13
Lunge/Groundwork/Liberty	5
General/training	3
Lower Roundpen	
Lunging/Groundwork/Liberty	2
Riding	1
Turnout	1
Never use	1
Arroyo	
Trail riding	16
Obstacles/Elements/Jumps	5
Walk/Walk dogs	4
General/School	2
Conditioning	1
ECIA Trail System	1
Arroyo Arena	
Riding	4
Obstacles/Jumps	2
Never use	1
Stable Roads	
Riding	2
Hand walking	2
Driving	1

# HERE'S WHAT YOU SAID...

## STABLE COMMUNITY SURVEY – FEBRUARY 2021

Which common areas do you use the most?



# HERE'S WHAT YOU SAID . . .

## STABLE COMMUNITY SURVEY – FEBRUARY 2021

Training Elements/Patterns/Obstacles in Upper Arena:

- \* 64% used or would use
- \* 36% do not or would not use

*SOLUTION: small elements rotated monthly*

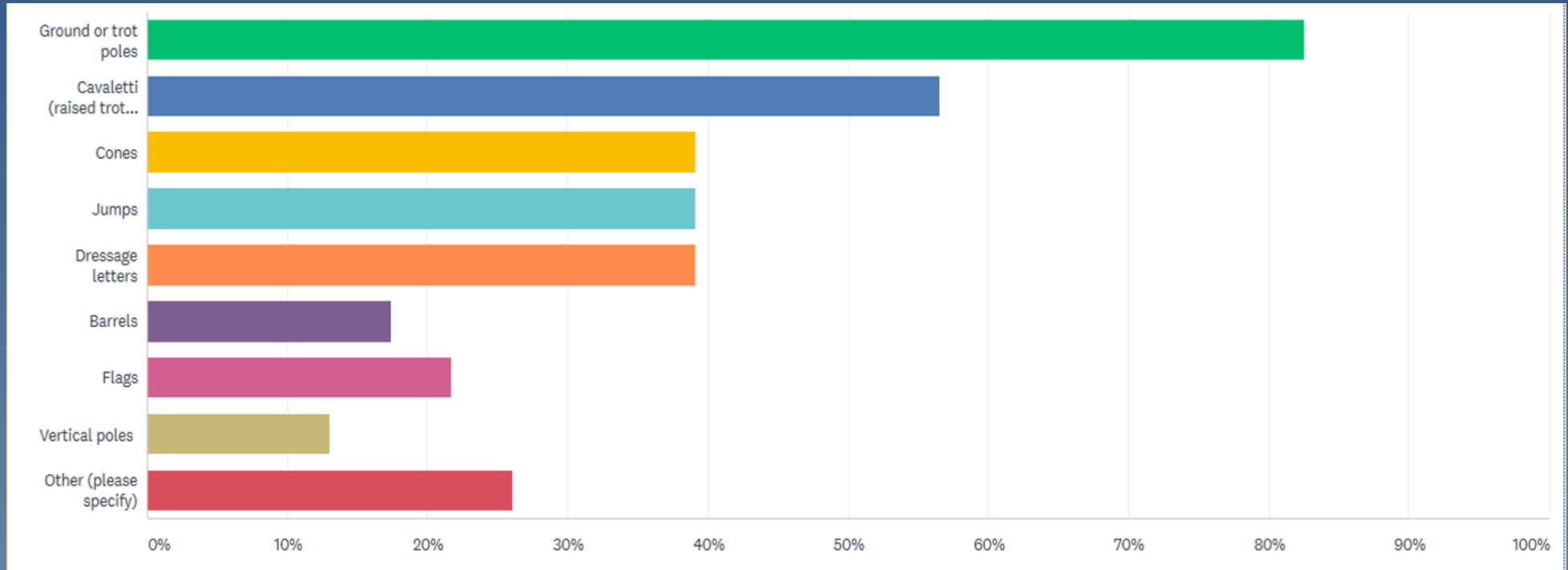
Should a riding arena be free from training aids/elements at all times?

- \* 56% yes; 28% no; 15% no opinion

*SOLUTION: lower arena*

# HERE'S WHAT YOU SAID...

## STABLE COMMUNITY SURVEY – FEBRUARY 2021



Please list training aids or elements you currently use or would like to use.

“Other” includes logs and other natural obstacles in arroyo; bridge, L element; none; bridges, risers, trail course.

# HERE'S WHAT YOU SAID . . .

## STABLE COMMUNITY SURVEY – FEBRUARY 2021

TURNOUT: Have you experienced challenges gaining access to turnout for your horse(s)?

- \* 52% - No

- \* 48% - Yes

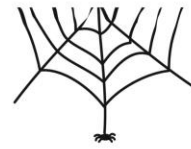
*SOLUTION "ATTEMPT" – designated times when turnout is priority*







# HALLOWEEN COSTUME PARADE



October 30, 10:30am  
at the Eldorado Stables

*COVID-safe practices  
will be followed*





# WHAT WE DID – ESC HIGHLIGHTS OF 2021

## Communication

- Dial-My-Calls
- Stable Community Survey
- Board training & orientation

## Maximize Use of the Amenity

- Trail course fencing
- Arroyo paths, obstacles
- Manure for gardeners
- Evaluated turnout options

## Repair & Improve Infrastructure

- Erosion repair by ECIA crew
- Wi-Fi cameras
- Fire mitigation

## Community Engagement & Outreach

- Halloween parade
- 4<sup>th</sup> of July parade
- 4 Wine & Weed Walks
- Manure loading days





# Exploring the Community Stable Ecosystem

**T**hrough persistent drought, abundant monsoon rains, then maturing grasses and forbs, the Eldorado Community Stable has continued developing its greenspace, with the assistance of volunteers and through hosting four monthly *Wine and Weed Walks* with guest speakers. All were residents of Eldorado and graciously shared their expertise.

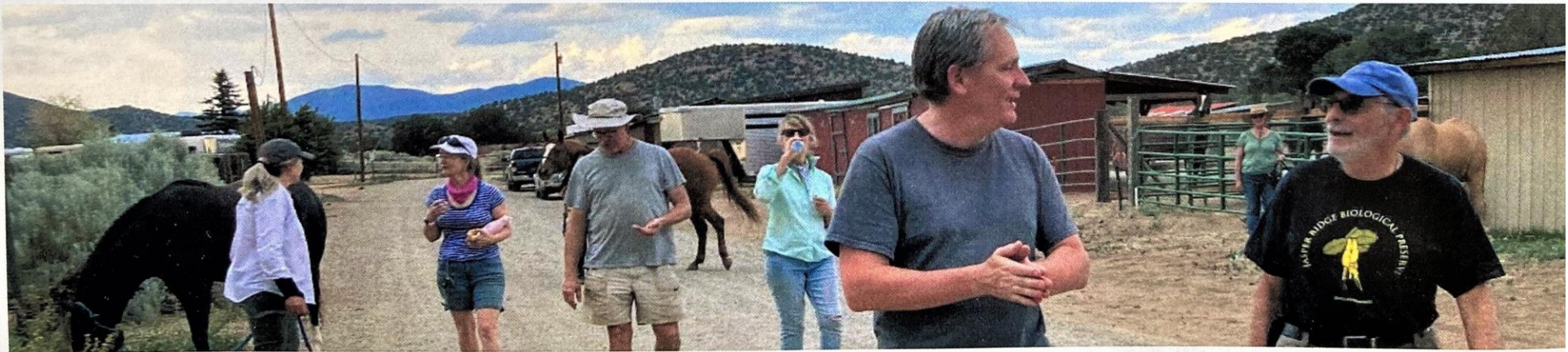
At the May *Walk*, botanist and barn owner Susan Tweit introduced us to the invasive and native plant species in the Stable common areas (See July *Vistas* article, [eldoradosf.org](http://eldoradosf.org)).

In June, Philippe Cohen—who managed biological research stations—explained how, as the local climate is changing so rapidly, scientists now recommend ecological restoration efforts shift, to emphasize collections of native and introduced plants that work well together in each locale, to sustain important functions of an ecosystem.

In July, Thomas Bredenberg—Conservation Committee member—identified an abundance of plant species thriving with the monsoon rains. The soil seed bank provided surprisingly widespread germination of amaranth, purslane, kochia, Russian thistle, and puncture vine.

At the August *Walk*, Kelly Brooke Smith—Eldorado Stable Committee member and managing attorney for Northern NM and Pecos Adjudication Bureaus at the Office of the State Engineer—discussed how water rights shape the use of water in New Mexico, especially considering the severe and exceptional drought present in the state.

It's been an educational summer as the Stable community works to improve the ecosystem, provide palatable and sustainable grazing for equines, as well as reduce amenity maintenance by staff and volunteers.



*Participants in the summer Wine and Weed Walks at the Community Stables.*



# Eldorado Stables Will Help Your Garden Grow

It's that time of year again, when gardeners' thoughts turn to compost. Free horse manure is available to all Eldorado residents at the Eldorado Community Stable.



*Amelia Adair scoops manure at the Eldorado Stables.*

There are two options for picking up manure:

**SELF-SERVE:** gardeners are welcome to bring their own shovel and containers and take as much manure as they wish out of the green manure bins located throughout the Stable Amenity. Bins are emptied on Tuesday mornings, so Saturday through Monday offer the easiest scooping.

**MANURE MATCH:** the Eldorado Stable Committee connects Eldorado gardeners seeking manure with barn owners willing to muck into containers provided by the gardener. No truck or shovel needed! Gardeners coordinate with individual barn owners to arrange to pick up their filled containers. Email [eldoradostables@gmail.com](mailto:eldoradostables@gmail.com) or call the Stable Committee hotline at 505 585-4054 for more information.

Gardeners, and all other Eldorado residents, are welcome to visit the Stable during daylight hours. The gates open and close automatically during daylight hours without a code—pull forward past the keypad and wait. Please observe posted Stable rules, including not speeding, smoking, or feeding the equines. Dogs must be leashed.

Composting is easy. To learn more about composting in this dry climate, check out the New Mexico State University Master Composter page at <https://bernalilloextension.nmsu.edu/mastercomposter/>. Horse manure is also great food for worm bins.

*—Photo by Elizabeth Mathews*



# GREENSPACE MANAGEMENT TASK FORCE

- 4 Wine & Weed Walks – educating the community about weeds and native species
- Promoted grazing, hand pulling of weeds and preservation of native species
- Meadow restoration test areas – native seed mix
- Fire mitigation
- Vistas articles on WWWs; blog posts

# PLANS FOR 2022

- Capital projects in ECIA proposed budget:
  - Culverts & drainage upgrades \$2500
  - Arroyo trails – larger bank/step obstacle \$3000
  - Arena harrow/rake tractor attachment \$7500
- Operating Expenses (and replacement projects under \$1,500)
  - Replace damaged lower arena panels, equipment pen \$1500
  - Replace poles & standards, barrels & cones; additional training equipment \$1500
  - Greenspace Management expenses \$500
  - Trail course equipment upgrades & replacement \$250
  - Ride through gate for access to Eldorado preserve \$350
  - Seating for round pens, arroyo arena \$500
  - Shade structure at arroyo arena \$500

# VOLUNTEER RECOGNITION – WITH GRATITUDE

Thank you to the many volunteers who contributed to making the Eldorado Community Stables a welcoming and functional community amenity

# LISTENING TO THE STABLE COMMUNITY

- What would you like to volunteer to work on in 2022?
- Your feedback on ESC priorities and goals for 2022