

# ELDORADO VISTAS

VOLUME VIII, ISSUE 5

May 2006

## IN THIS ISSUE

Survey.....	2
From the President.....	3
What is a Nuisance .....	3
In the Community .....	4-5
Frank Schober.....	6
White-Crowned Sparrow ..	7
Senior Center Update .....	7

Monthly Newsletter of the Eldorado Community Improvement Association

1 La Hacienda Loop, Santa Fe, New Mexico 87508 ▼ (505) 466-4248 ▼ [www.eldoradocommunity.org](http://www.eldoradocommunity.org)

## Drawn to Art

**WHAT HAS GROWN** from a group of 15 artists in 1992 to today's 189-member Eldorado Arts and Crafts Association is truly amazing. Whether the artists discovered Eldorado by chance or were drawn by the success of tours, it all adds up to a tremendously diverse concentration of artists in New Mexico's largest unincorporated residential community. Artists come for the wide-open spaces, the ample lots and the ability to purchase homes with studios, or homes that lend themselves to remodeling to incorporate a studio. Eldorado is a creative community.

In 1991, a group of artists formed the Eldorado Arts and Crafts Association (EACA) to socialize and discuss art with like-minded folks. Of that original group, **Aurora Sanchez, Karen Fitzsimmons, Ford Robbins** and **Betty Carlson** are participants in the 15<sup>th</sup> Annual Studio Tour on May 20 and 21, 2006, which features 94 artists in 61 studios.

According to **Arlene Siegel**, past president of the EACA, the idea to have a Studio Tour took shape in 1992, with 15 artists participating. Karen Fitzsimmons recalled that on the only day of that first tour, it rained and few visitors came. When a tour artist suggested a pilgrimage to see all of the studios, that is just what they did, turning a disappointment into a fun social event.

Each year the Studio Tour has grown as more artists have moved into the community and joined the EACA. The first flyer grew from a single sheet with a map, to the current over 40-page brochure that includes photos of the artists' work, a map to the studios and ads from sponsors.

Over the last six years, the Studio Tour has taken a dynamic leap forward, according to **Joretha Hall**, 2006 EACA President. The increased success of the

Studio Tour has been in direct proportion to the increased advertising that reaches from Albuquerque to Taos and from Las Vegas to Los Alamos. Repeat collectors come each year to see what is new and exciting at the Preview Gallery (held this year in the El Dorado Elementary School gym), where each artist exhibits one sample of his/her work.

### Recent contributions to the Studio Tour are:

- ▼ A Preview Gallery to showcase each artist's work, begun in 2001
  - ▼ A website, [www.eldoradoarts.org](http://www.eldoradoarts.org), begun in 2002
  - ▼ Radio advertising, added in 2003
  - ▼ Improved signage to studios and the Preview Gallery, in 2003
  - ▼ Non-profit status for the EACA, received in 2003
- Not only is the Studio Tour a way for artists to show and sell their work, but each year the artists contribute a portion of their proceeds back to community organizations such as the El Dorado Fire and Rescue Department, the El Dorado Elementary School, Vista Grande Public Library and the Community Band. Since 1999, artists have donated nearly \$15,000.

### This Year's Studio Tour

Join us on May 20 and 21, from 10 am to 5 pm. There will be 94 Artists showing in 61 Studios. The Preview Gallery will be open at the El Dorado Elementary School gym from 10 am to 5 pm Saturday and Sunday. Stop by to see the artwork, and pick up a brochure that includes a map to all the studios. For more information, call 466-6245 or 466-3256.

### Become a Member

EACA membership (\$15 per year) is open to anyone interested in attending informative monthly programs, monthly ShopTalk coffees, the weekly Plein Air Landscape group, and the Figure Drawing Group. To join, contact **George Henke**, Treasurer, at 466-4988.

*(Participation in the Studio Tour is limited to individuals living within the three Eldorado entrances westward off Hwy 285.)*

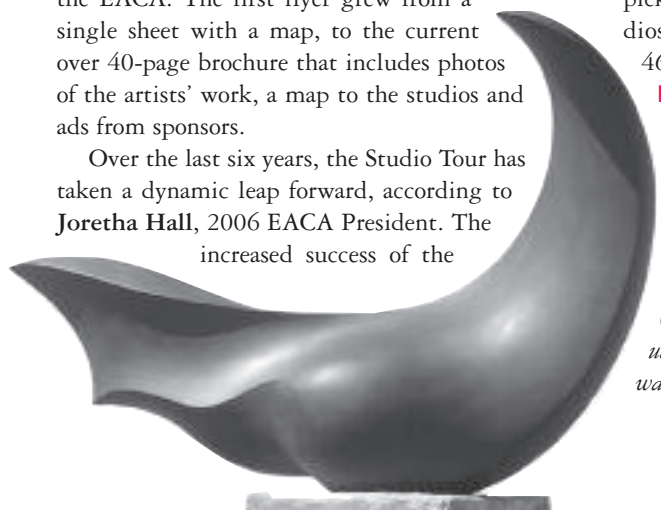
—Janet Amtmann

**ECIA Board  
Work Study  
Meeting,  
Community  
Center, Mon.,  
May 15, 7 pm**



**If you see a flag, you're  
at a studio.**

**Sculpture at Left: Wing  
Wave by Tim Roundy.**



*Share your  
comments  
with us!*

*For policy and  
deadline, see  
below*

## Editorial Policy

*Vistas* invites opinions, ideas, stories, photos, and art from the community at large. Please include contact numbers for fact checking purposes. The newsletter will not publish unsigned letters or material deemed inflammatory. Material will be printed at the discretion of the editors. Letters over 150 words will be edited for fit. Community announcements are welcome; accompanying photos are welcome, too. **DEADLINE:** Newsletter deadline is the 3rd day of each month. Submissions can be dropped off or mailed to the ECIA office or emailed to [info@eldoradocommunity.org](mailto:info@eldoradocommunity.org). Please include "Attn: *Vistas*" in your message.

## Mission Statement

The mission of *Vistas*, the monthly newsletter of the ECIA, is to inform the Eldorado community about issues before the ECIA Board and the membership at large. By so doing, the publication seeks to foster increased neighborhood pride and community participation in the decision making process.

## Road Survey

**F**OR THE ROAD COMMITTEE to accurately represent the interests of Eldorado residents, please fill out the following survey. Either turn in this paper version as instructed below, or submit your answers via Eldorado's community website at <http://www.eldoradocommunity.org> (click on Road Survey).

**Note:** This survey is being conducted only for input; the County Public Works Department is responsible for all road maintenance in Eldorado.

1. What surface do you prefer on the road on which you live. Please select one of the four choices below.
  - ☐ Dirt (base course)
  - ☐ Gravel mixed with oil (chip seal)
  - ☐ Asphalt
  - ☐ Leave it as it is
2. Would you be in favor of a special assessment fee if that would expedite improvements to your road?
  - ☐ Yes
  - ☐ No
- 2a. If yes, what is the maximum amount you would be willing to pay per year?  
\$ \_\_\_\_\_
3. This information is meaningful only if you let us know what road you live on. Please fill in your name and address below.

Please clip out this survey and return it before June 2, 2006 to:

ECIA, Inc.  
1 La Hacienda Loop  
Santa Fe, NM 87508

**There will be an open forum to discuss these road matters on June 5 at 7 pm in the Railroad building at the Community Center.**

Your information is greatly appreciated!

—The Road Committee

## To Weed or Not to Weed

**A**S THE WEATHER WARMS and weeds and native plants begin to grow along the edges of Eldorado roads and streets, the county will be mowing. This is done every year to improve sight lines around curves and at intersections, and to allow pedestrians a safe place to move out of traffic when necessary.

The ECIA is questioned from time to time as to whether it is really necessary to cut down some of the attractive wildflowers and vegetation along our roads. The short answer is yes. Bearing in mind that two pedestrians have been killed along our roads in recent years, the community's first concern needs to be for safety. Remember, each of us has an acre or more of our own to plant with native vegetation. Native wildflower and grass seeds are available at Plants of the Southwest and gardening suggestions at Tropic of Capricorn, among other places.

—Dan Drobnis



## Dog Letter

**W**E RECENTLY MOVED to Eldorado and we love it here. But, among the physical and spiritual beauty there is one small annoyance. We regularly walk our dog in the neighborhood and we always pick up after her. We seem to be alone in that, despite the many dog-owners here.

With our increasing population, along with the almost universal dog ownership, not picking up after one's dog is extremely antisocial as well as unsanitary to humans and other animals. Allowing dogs to run uncontrolled only adds to this problem. If you believe it's not an issue, take a walk along any of the unpaved Eldorado roads—don't wear your best shoes!

I appeal to all Eldorado dog owners to consider your neighbors and pick up after your canine buddies. We'll all benefit from the improved environment.

—David King

## From the President

### DOG PARK

The enthusiasm about having a dog park in Eldorado is really encouraging. It is fun to do something that seems to please the community. The Board embraced the idea and passed to the Finance Committee a request to determine funding before moving on for bids on fencing and other necessities involved.

A committee to determine the rules and regulations for the park must be formed. If you are interested in serving on this short-term committee please call me at 466-2466 or email me at [jpkeducate@aol.com](mailto:jpkeducate@aol.com). The committee will convene in mid-June.

### AVENIDA AZUL HIKE/BIKE PATH

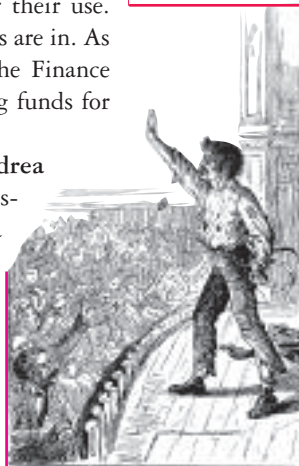
For two years the Board has been working with the county to determine if a hike/bike path is feasible for Avenida Azul. At this point, the conclusion is that the road is not in the center of the county right-of-way (it meanders from side to side) and therefore to build a path would be almost impossible. There would have to be five crossovers and each one comes at a dangerous place. The association staff will work with the county to keep the vegetation cut at the side of the road and we ask motorists to drive the speed limit and be watchful for walkers and bikers.

### PAVILION

You have probably been reading about the proposed pavilion in the *Eldorado* section of *The New Mexican*. The Board did accept and approve the plan submitted by the steering committee at the March Board meeting. As proposed, the pavilion will be slightly larger than first planned and will be an outdoor/indoor space. Association staff told the Board that on average there are forty meetings/events at the community center in a week and that some residents have to be denied space for their event because there is no room. The proposed pavilion will give the community one more space for their use. Cost will not be determined until the bids are in. As usual, the Board, with approval from the Finance Committee, will be prudent in allocating funds for this project.

Finally, I am sad to tell you that **Andrea Cohen**, Board member, submitted her resignation from the Board. Andrea was a valued member who had good ideas and participated in all Board functions. She will be missed.

—Jeanne Klein



## What is a Nuisance?

**HERE ARE THE MOST COMMON** complaints we receive from residents that certainly could be defined as nuisances (Covenants Article II, Section 14):

- ▼ Dogs barking and loose (5:30 am to 11 pm... bark, bark, bark, bark)
- ▼ Yards...messy and trashy (old trampolines, garbage, building stuff and more stuff)
- ▼ Vehicles that are never moved or screened (Would you drive that on the road?)
- ▼ Lights that are not fully shielded (I can't use my telescope to see the stars!)
- ▼ RVs that are not screened (concealed... obscured... see Guideline Section 19)

The new October 20, 2005 *Guidelines for Protective Covenants and Building Restrictions for Eldorado at Santa Fe* has a new Section 20 – Nuisances Guideline that states: "Section 14 of the Covenants forbids unsightly or offensive conditions which can be deemed nuisances when exposed to view. Precise definition of that condition can be difficult. Therefore, below are described a few examples of nuisance conditions to serve as a guide. Concealment from view from roadways and adjacent properties is required. Other nuisance conditions can also meet these criteria and some can be site-specific."

- ▼ Abandoned or partially repaired vehicles or devices or parts of vehicles and other devices.
- ▼ Miscellaneous household items including household appliances, equipment and similar devices.
- ▼ Business and household construction devices and machinery such as scaffolding, tractors, backhoes and the like.
- ▼ All construction material unless temporarily stored for immediate incorporation in an approved construction project for this specific property. Construction material shall not be stored on one property for incorporation in construction taking place on another property."

I want to thank everyone for your support and efforts in making Eldorado a place to enjoy all of the great New Mexico "enchanted views." Suggestion... try compliance, first!

—Charles Smith, the ECIA  
CCR

### ECIA OFFICE

#1 La Hacienda Loop  
Santa Fe, NM 87508  
466-4248, 466-4249  
[info@eldoradocommunity.org](mailto:info@eldoradocommunity.org)  
[www.eldoradocommunity.org](http://www.eldoradocommunity.org)

**General Manager**  
Vacant

### BOARD OF DIRECTORS

**President**  
Jeanne Klein  
466-2466  
[jpkeducate@aol.com](mailto:jpkeducate@aol.com)  
**Treasurer**  
Dan Drobnis  
466-4781  
[Drobnisd@sdsu.edu](mailto:Drobnisd@sdsu.edu)  
**Director**  
Sandy MacGregor  
466-0882  
[s.macg@earthlink.net](mailto:s.macg@earthlink.net)  
**Director**  
Johnny Martinez  
466-0696  
[jmartinez54@comcast.net](mailto:jmartinez54@comcast.net)  
**Director**  
Vacant  
**Director**  
Ed Benrock  
466-2088  
[Francesed@msn.com](mailto:Francesed@msn.com)  
**Director**  
Philip Balcombe  
466-2982  
[pgbalcombe@cybermesa.com](mailto:pgbalcombe@cybermesa.com)

### COMMITTEE CHAIRPERSONS

**Finance:** Gisela Knight  
**Architecture:** Bill Schwent  
**Conservation:** Vacant  
**Stable:** Dina Sassone  
466-2516  
**Election:** Vacant  
**Road:** Ed Benrock  
**Information:** Ken McPherson  
**Neighborhood Watch:**  
Mary Uhl and Marilyn Walker

### VISTAS NEWSLETTER

**Editor:**  
Ken McPherson  
466-4161  
[kenzwork@hubwest.com](mailto:kenzwork@hubwest.com)  
**Designer:**  
Hope O. Kiah  
[hope@webdesignbyhope.com](mailto:hope@webdesignbyhope.com)  
**Editorial Assistants:**  
Lynn McPherson  
Debby Padilla  
466-4248

### COMMUNITY RESOURCES

Vista Grande Library  
466-READ  
Security  
204-2945  
Fire and Rescue  
466-1204  
Animal Control  
992-1621



### An Evening at Club Tropicana!

Don't miss the first PTA-sponsored Adults Night Out! All parents, grandparents, teachers, and neighbors are invited (provided you are at least 21 years old). Please join us for the fun on Friday, May 5, from 6 to 10 pm, at Tropic of Capricorn. Highlights of the evening include a delicious Latin/Caribbean stand-up buffet, a cash bar offering beer and wine, a Silent Auction with a "fine dining" theme (gift certificates, food items, etc.), door prizes, and lots more.

Tickets are available for an advance purchase price of \$30 per person or at the door for \$35, but space is limited (call **Anna** at 466-1683). Proceeds will help fund PTA supported programs at El Dorado Elementary School. These include theatrical performances, physical education, artists in residence, cooking classes, professional development for staff and student recognition programs. Special thanks go to Rio Chama Restaurant and Tropic of Capricorn for their generous support, plus the many volunteers from the El Dorado PTA. This will definitely be a night to remember!

### Water Notices

According to the Board of Directors of the Eldorado Area Water and Sanitation District, ratepayers will see water restriction notices appearing in the community due to the continuing extreme drought conditions.

For information on what to do when water alert signs are posted, residents should go on the web to [eldoradowaterdistrict.com](http://eldoradowaterdistrict.com). For more information, call Mary Ann Hale, Board Secretary at 470-4777.

### Save a Snake

The Wildlife Center in Española trains volunteers annually to rescue and relocate reptiles should the need arise. Snakes benefit our ecosystem in many ways. Primarily they prey on rodents that can harbor plague, and potentially spread Hanta virus. Rather than kill a snake that might enter your yard, please call the Wildlife Center at 505-753-9505 and have them dispatch one of their volunteers to relocate the reptile. You can also call



Tom Wyant, the Educational Program Director of the Wildlife Center, at 505-672-1981 for snake removal or information on the Center's wildlife rehabilitation program.

### Discussion Group

Utne Monthly magazine has created "discussion groups" regarding articles and stories they publish. I want to see if there are other Utne Monthly readers here in Eldorado that would like to start and participate in a group meeting at a different member's home once a month, possibly including a potluck meal. If interested, call **Lew Snyder** at 466-4132.

### Pool Open!!!

Every person over the age of eight must present a white plastic pool pass to enter the pool. If you misplaced your pass, there is a \$10 replacement fee.

**Attention Renters!** Before you are allowed pool access, the owner of the home you are renting must submit a letter to the ECIA authorizing you to use the pool.

### Swim Times:

The pool is open from Memorial Day through Labor Day weekend.

**Lap Swim:** 8 to 9:30 am every day; 6 to 8 pm on Monday, Wednesday, and Friday.

**General Swim:** 9:30 am to 8 pm Tuesday, Thursday, Saturday, and Sunday; 9:30 am to 6 pm on Monday, Wednesday and Friday.

Please keep food and beverages in the snack area or patio area only!

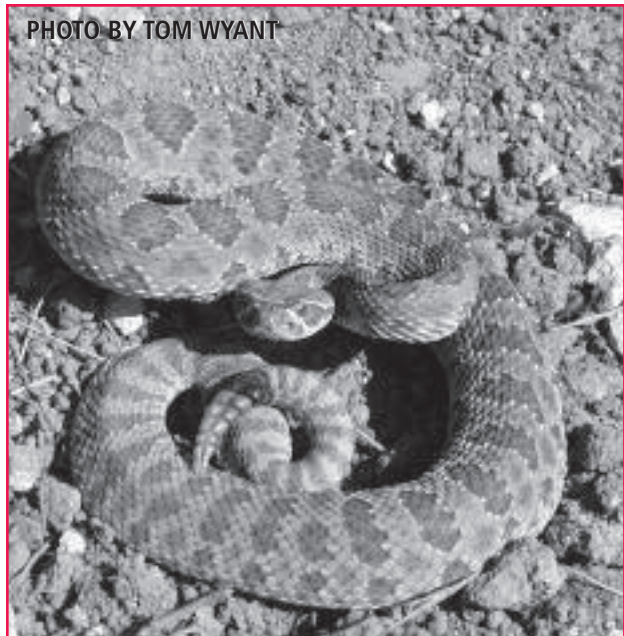
### Life Guards Needed

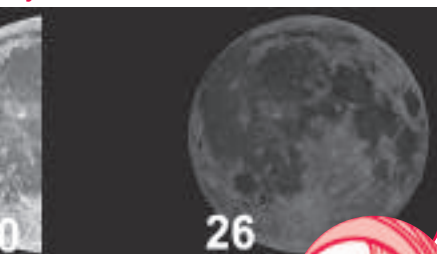
The swimming pool opens on May 27 this year. We are looking for lifeguards for the season. You must have current lifeguard certification and a current CPR certificate. Anyone interested please contact **Bill Donohue** at the ECIA office at 466-4248.

### Clean It Up!

Good Sam chapter members around the U.S. and Canada will be cleaning litter from roads and parks on May 20 & 21. The Eldorado Roadrunner Chapter of Good Sam Club will be joining in on the cleanup for the third year in a

PHOTO BY TOM WYANT





## Astronomy Corner

### Star Brightness

Some 2,000 years ago, Hipparchus, the Greek astronomer, classified the stars according to their visual magnitude: a designation of 1st for the brightest stars and 6th for the dimmest. A star of 1st magnitude is almost 100 times brighter than a star of 6th magnitude.

The brightest objects we see in the sky are the Sun and the Moon and their magnitudes are given as negative numbers (-26.7 and -13 respectively). The apparent magnitude of an object depends on both its intrinsic brightness and its distance from Earth. In other words, an intrinsically faint star, if close to Earth, can appear brighter than an intrinsically bright star much more distant.

### May Sky:

**Saturn**, magnificent in a telescope after evening twilight in ENE; **Venus**, high over the horizon before the Sun; **Mars**, high and closer to Saturn; **Jupiter** is in the constellation Libra. A good 6-inch or 8-inch telescope will show Jupiter's darkish "belts" and lighter "zones" parallel to the equator; the **Eta Aquarid meteor shower** will occur between May 6 and 8 in the early morning hours; **Mercury**, very low in the WNW 45 minutes after sunset.

Astronomy Day is Saturday, May 6.

### Next time: Star Distances

—Juan Alvarez  
Jalva88610@aol.com

row. We are asking for help from homeowners and other service clubs on this project. We have enjoyed the help of others in the past three years and look forward to working with all who volunteer this year. For information, call Bill or Lillian Bodle at 466-3011.

# May Events

## Left out? Help us compile a comprehensive events listing.

Email [info@eldoradocommunity.org](mailto:info@eldoradocommunity.org) with your meeting/event information, or bring it to the ECIA office by the 8th of the month for publication in the following month's *Vistas*. Please include "Attn: Vistas" and be sure to indicate:



1. **Type of Event**
2. **Location**
3. **Date & Time**
4. **A Resource Person** (one who can answer questions both about the event and the sponsoring organization) and his/her telephone number.

Photographs (digital or snapshots) are encouraged!

Note: All meetings are at the Community Center, unless otherwise noted.

LR=Living Room, F=Foyer, CFR=Conference Room, CR=Class Room, RR=Railroad, K=Kitchen

### MAY SPECIAL EVENTS

ECIA Annual Meeting	Mon., May 1, 7 pm	at Elementary School old gym
ERA Flea Market	Sat., May 13, 8 am	Community Center parking lot
Pool Opens!	Sat., May 27, 9:30 am	Community Center
Memorial Day	Mon., May 29	ECIA offices closed

### COMMITTEE MEETINGS

EAWS&SD*	Tues., May 2, 7-9 pm		466-2411	CFR
285 Coalition	Wed., May 3, 7-9 pm	Kathy Pilnock	466-1598	CFR
Finance Committee	Wed., May 10, 10-noon	Gisela Knight	466-2568	CFR
Architectural Committee	Wed., May 10, 7-9 pm	Bill Schwent	466-7708	CFR
Board Work Study	Mon., May 15, 7-9 pm	ECIA	466-4248	CFR
EAWS&SD*	Tues., May 16, 7-9 pm		466-2411	RR
ECIA Board	Thurs., May 18, 7-9 pm	ECIA	466-4248	CR
Information Committee	Mon., May 22, 7-8 pm	Ken McPherson	466-4161	F
Stable Committee	Tues., May 23, 7-9 pm	Dina Sassone	466-2516	CR
Architectural Committee	Wed., May 24, 7-9 pm	Bill Schwent	466-7708	CFR

### MONTHLY MEETINGS

Book Club	Sat., May 13, 9-10:30 am	Joan Lamarque	466-6000	
Book Club/Pot Luck	call for date and time	Ken Fischer	466-2537	
Library Book Group	3rd Mon., 7-9 pm	Shelley Moore	466-9636	VGPL
Search & Rescue	Thurs., May 11, 6:30-9:30 pm	Dave Burdett	466-9765	CR
Troop 414 Committee	1st Wed., 7:30-9 pm	Bruce Blossman	955-0880	CR
Venturing Crew 414	2nd & 4th Wed., 7-9 pm	Vera Hayduk	466-1726	C
Cub Scout Pack 414	4th Tues., 7-9 pm	Ty Ransdell	466-2579	Sm Gym
La Canada Wireless	Mon., May 8, 7-9	lcwireless.org		LR
MOMS Club	Call for date and time	M. van Domselaar	466-3864	
Shakespeare Group	Tues., May. 16	Etain O'Malley	466-4708	CFR
Perform. Arts Assoc.	2nd Sat., 10 am-noon	Etain O'Malley	466-4708	RR
Bird Walk	1st Sat., 8:30 am	Ron Duffy	982-2890	

### WEEKLY MEETINGS

AA	Tuesdays, 5:30-6:50 pm			LR
AA	Wed., 10:30-11:30 am			RR
AA	Fridays, 6-7 pm			CFR
AA	Sat., 10:45-11:45 am			LR
AA	Sun., 5:15-6:15 pm			CFR
Boy Scout Troop 414	Wednesdays, 7-9 pm	Paul Tuck	466-4815	RR
Men's Bridge	Wednesdays, 6:30-9 pm			LR
Bridge	1st & 3rd Fri., 1-4:30 pm			CR, LR
Bridge	2nd & 4th Fri., 1-4:30 pm	Pat Lavengood	466-9765	CR, LR
Bridge	Wednesdays, 9-noon	Nancy Rost	466-2832	LR
Community Band	Thursdays, 6-8 pm	Joel Hopko	466-8412	
Fire & Rescue Training	Wednesdays, 7-9 pm	Fire Station Office	466-1204	Station
Fire & Rescue Work Duty	Saturdays, Call for time	Fire Station Office	466-1204	Station
Senior Lunch**	Wednesdays, 12-1 pm	Therese Janowski	466-1397	CR
Knitting Club	Tues., 10 am-noon	Joyce Hanmer	466-3018	LR
Adult Volleyball	Wed., 7-9 pm	Arlene Mayer	466-6641	School

\*Eldorado Area Water and Sanitation District

\*\*Reservations Required

VISIT OUR WEBSITE: [www.eldoradocommunity.org](http://www.eldoradocommunity.org)

## Sharing Preparedness with Eldorado

**F**RANK SCHOBER'S SERVICE to the Eldorado community is extensive—ECIA Board member from 2000-2005, spearhead for the Information Committee (responsible for the start-up of *Vistas*, the community website, and bulletin boards/marquees), and tireless advocate for the Neighborhood Watch and Traffic Calming Committee. Frank's style of volunteerism in Eldorado was probably best described by Alexis de Tocqueville, writing on "Democracy in America" in the 1830s: "In every case, at the head of any new undertaking, where in France you would find the government, in the United States you are sure to find an association." One does not often search for a son of the Enlightenment among retired army officers, but Frank has always been rooted in those values.

This hard-working member of our community grew up with his mother, who came from Oklahoma pioneers, and his father, who came from German beer brewers who immigrated to the U.S. through Mexico. "I assume that my father was legal, but I never really asked," he notes.

Frank relates that his original ambition after graduation from the University of Santa Clara in California was to continue on to law school. However, his Army ROTC membership required military service first. He was assigned to the

Third Infantry Division at Fort Benning, Georgia. He then extended his service commitment to take an interesting assignment in Germany that had become available.

He served with the Army Signal Corps before being offered the opportunity to teach at West Point under a program to bring non-West Point instructors in to broaden the teaching program. "Before I could be eligible to teach, the Army sent me to Harvard for a Master's Degree in Public Administration. I had the opportunity to attend classes out of uniform—almost like a two-year vacation," Frank remembers.

Frank taught American History and Middle Eastern Studies at West Point for three years. Following that, the Army sent him to Language School for a year of immersion in Arabic, adding to

the Spanish and German learned from his father. "I have lost a bit over the years, but I can still read Arabic fairly well, and I can still converse with Arabic shopkeepers in the big cities," he notes.

After that, Frank spent a spell in General Staff College before the year he commanded a battalion in Vietnam's Mekong Delta. "Some of the guys signed up for two or even three one-year tours of duty. One was enough for me," Frank recalls. He remembers flying over areas of his command at night that appeared quite peaceful during the days. "Tracers from the ground kept following the aircraft—quite spectacular."

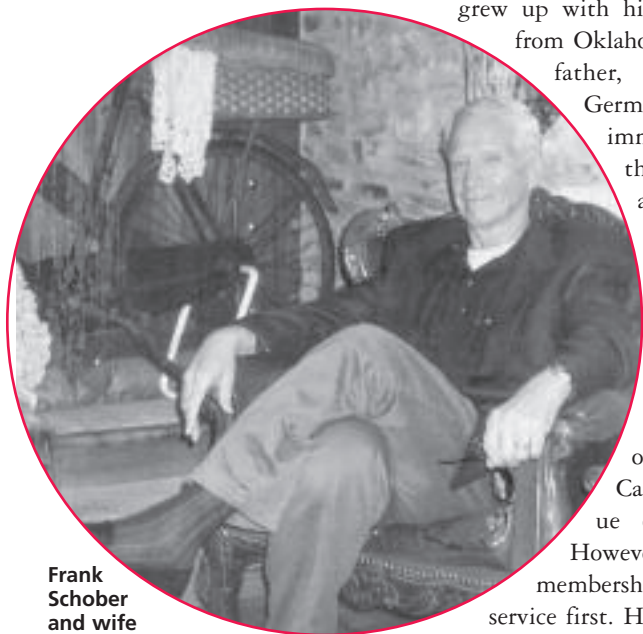
Following Vietnam, Frank was assigned to the Pentagon, including a period as speechwriter to Army Chief of Staff (COS) William Westmoreland. "That was interesting. I sometimes got to put my own ideas into his speeches," he smiles wryly. He also wrote for Creighton Abrams who followed Westmoreland as Army COS. "He liked only outlines—much easier work, but not as much fun."

At one point, Frank was invited to interview for the position of California Adjutant General (AG)—the commander of the California Army and Air National Guard. At that time, he was also on the short list for promotion to full Colonel, but the AG job carried with it the rank of Major General—a jump of two grades. He impressed California Governor Jerry Brown and got the job, serving for eight years—the longest assignment of his army career, and the one from which he retired.

"California has to be considered emergency prone," Frank notes. "Drought, floods, earthquakes, civil disturbances—California has it all." So it seemed natural for Frank to continue in Emergency and Disaster Planning after retirement. He continues to work part-time for a private contractor based in California, doing emergency plans for cities and counties, including a recent one for Mora County in New Mexico. He was recently appointed by New Mexico's Governor Bill Richardson to the state's Emergency Preparedness Task Force. "Many New Mexico counties are among the poorest in the U.S. in terms of per capita income, and they require careful allocation of their resources," he notes.

Frank and his wife, Gale, checked a number of areas for retirement possibilities before finding their present Eldorado home on a website's virtual tour. "California was becoming just too crowded," he points out. "New Mexico is blessed—if that is the right word—with a scarcity of water. With water, we would look like Phoenix." And, despite Frank's expertise, that is one disaster he doesn't want to face.

—Dan Drobnis



Frank Schober and wife Gail found their Eldorado home on a virtual Web tour and never looked back

# The White-crowned Sparrow (WCS)

**SEE THIS LARGISH** (much studied) sparrow sometimes during the winter months, but usually in March and April and September through November when flocks migrate to and from Mexico, although some may winter in Southern New Mexico. This perky 7-inch long bird with a wingspan of 9.5 inches is usually seen on the ground or in low foliage. Their food consists of spiders, grass seeds, fruits, blossoms and fresh leaves.

WCS pairs are usually monogamous and they build cup-like nests of grass at a site selected by the female (primarily in Northwest Canada and Alaska, although some birds are full-time residents of Northern New Mexico). Three to five helpless young hatch in 11 days and fledge in 7 to 12 days. A second brood may be started in 9 to 20 days.

There are five subspecies of the WCS, with slight changes of appearance going from west to east across the U.S. All have a distinctive white stripe going from the bill across the top of the head. Below the white is a black stripe, another lower white stripe and a final narrow black stripe from the eye to the back of the head. The breasts, back and under wings are pale gray, while the wings are brown with some black and two white wingbars. Their beaks are small and pointed, ranging in color from pinkish, to orange-pink, to orangish. The amount of white shown on the head varies by subspecies and changes when crown feathers are raised. Females are slightly smaller than males and marked the same. Juveniles have a dark brown crown stripe, making them easy to confuse with Chesnut-crowned Sparrows in the fall.

WCS with the most prominent black and white head striping prove to be dominant, and juvenile females are most subordinate according to experiments done by Gary Fugle. This "badging" may prevent aggression between individuals and aid overall flock survival.

Each subspecies has its own dialect which young birds learn from others singing in the neighborhood. When subspecies intersect, some birds sing in two dialects! There are many theories about why different dialects exist, but the birds are keeping the real reasons a secret.

A short blurb and bird song recording can be found at <http://www.birdnote.org/birdnote.cfm?id=189>

—Pam Henline



PHOTO BY: JOHN KORMENDY

## Senior Center Update

**THE KEN AND PATTY ADAM** Senior Center suffered a setback this year when Governor Richardson vetoed the \$400,000 additional funds to complete the facility. Other senior centers throughout the state received funds for various projects, but since the Adam Senior Center was not on the Agency on Aging list due to a miscommunication with the county offices, the funds approved by the legislature suffered the veto pen of the Governor.

All is not lost, however, as construction continues for the facility with an expected completion date of July of this year. Senior Center Board members and the Building Committee have been in contact with County Commissioner Jack Sullivan, Rudy Garcia of the County facilities, and the Agency on Aging. It appears that with an additional \$165,000, the county would have enough funding to complete the kitchen, furnish the building and open for business. Senior Center Board efforts will continue to acquire the necessary funds to make the center operational.

The planned exercise and arts and crafts rooms, blacktopping of the parking area and landscaping will have to wait until next year's legislative session for funds to complete the project.

—Janet Amtmann

**A BIG  
THANK YOU**  
*goes out to all  
the volunteers  
who helped clean  
up Eldorado on  
April 22! Your  
service goes  
further than you  
will ever know.*  
—Debby Padilla

*Security 204-2945  
Sheriff 428-3720*

## *Flea Market Returns May 13*

Time to start setting things aside from your garage and closets for the Eldorado Residents Association Spring Flea Market on Saturday, May 13, at the Community Center. Vendors need to set up from 7 to 8 am. Sales run from 8 am to noon.

Once again the number of vendors will be limited to space available. There are no reserved spaces; it is first come, first served. Vendor costs are \$10 for Eldorado residents, \$15 for vendors from other communities and \$20 for commercial vendors.



PHOTO BY HOPE O. KIAH

No food or weapons may be sold. Vendors are expected to bring what they need to set up and display their goods, and take any unsold items with them at the end of the market.

Volunteers are always needed to help with parking and the coffee and donut table that the ERA runs. To volunteer, call **Pat Kuhlhoff** at 466-4877.