

# ELDORADO VISTAS

VOLUME VII, ISSUE 11

Nov. 2005

## IN THIS ISSUE

Letters .....	2
Ramadas & Structures.....	3
Your Roads .....	3
In the Community .....	4-5
El Dorado Fire Fighters.....	6
Your Family's First Aid .....	7
Pavillion Discussions.....	7

Monthly Newsletter of the Eldorado Community Improvement Association

1 La Hacienda Loop, Santa Fe, New Mexico 87508 ▼ (505) 466-4248 ▼ [www.eldoradocommunity.org](http://www.eldoradocommunity.org)

## Eldorado Area Shopping Goes Upscale

**GOOD NEWS FOR ELDORADO**  
Residents looking to save gas on trips into town—construction has begun on the Village at Eldorado, on the southeast corner of Avenida Vista Grande and Caliente Road, while across the street the Eldorado Supermart at the Agora has been doubled in size. In addition, the Agora itself has recently remodeled its central courtyard to eliminate steps, upgrade to brick pavers, and provide additional shade for outdoor dining and relaxing.

Owners of the Eldorado Supermart have indicated that they intend for the new market to be large enough, with competitive prices, to allow 285 south corridor residents to use it as their main source for groceries. And the Agora courtyard remodel is intended by the Agora's new owners to draw shoppers as an attraction on its own, since the supermarket entrance now faces directly onto the parking lot.

Across Vista Grande to the south, shops and businesses are already signed up for space in the new Village at Eldorado. They include Coldwell Banker's real estate office, a pet supply store including tack and a pet bakery, the Outback Video store, an herb and tea shop, and an Italian gourmet pizza store. An art gallery and/or co-op, a well-equipped gym, a pub/restaurant, and a 3-screen cinema complex with live performance stage are also being finalized. In addition, about 50% of the 30,000 square feet of planned retail space remains available for lease. Some of the shops may open by spring of next year; the rest are projected for later in the summer of 2006.

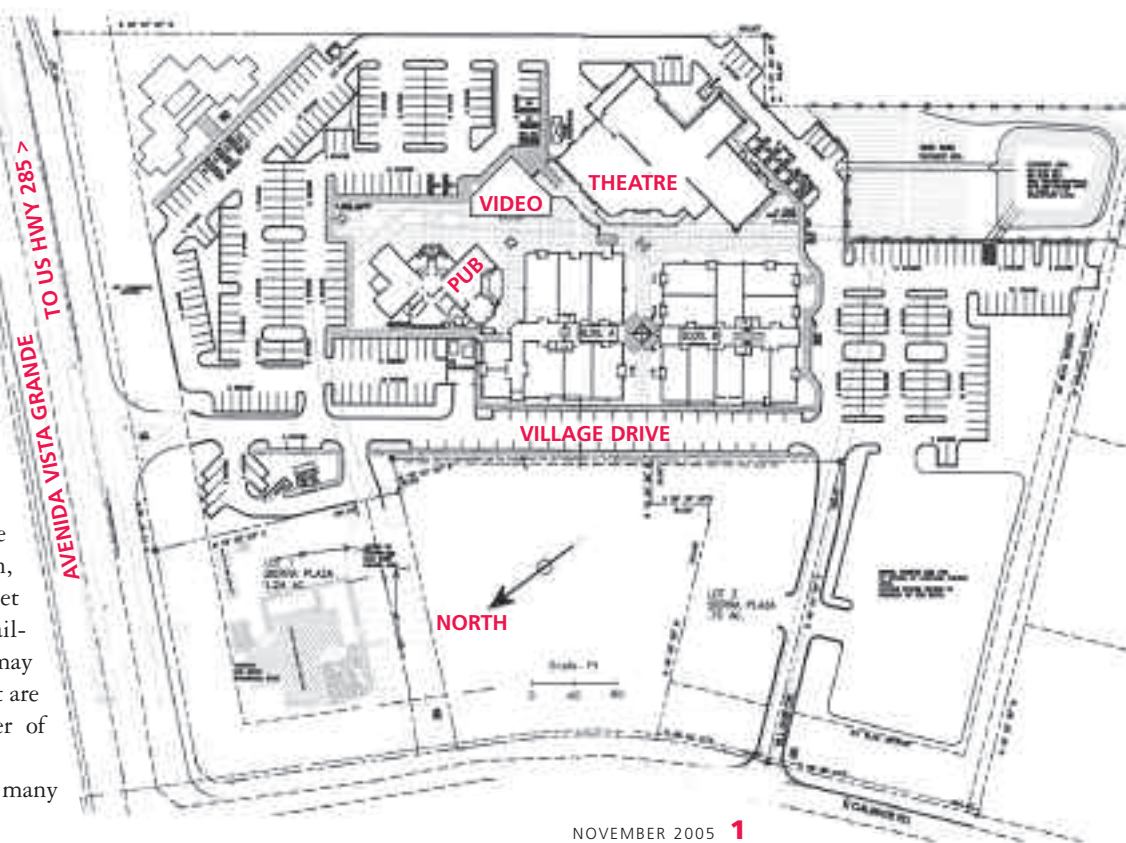
The Village is planned to serve many

of the shopping and entertainment needs of about 20,000 people anticipated to live in the 285 south corridor within the next decade. Allan and Stacy Crossingham have worked extensively with the 285 South Highway Corridor planning committee, the Santa Fe County Planning Division, and the 285 Coalition of subdivisions. Water for the Village will come from a private well.

Private lawsuits and Santa Fe County approvals for the Village project have consumed considerable time, addressing issues of water, traffic flow, and architectural design, among others. Stacy comments, "I have been working with the community for the last five years to plan something that all the residents will find as a good neighbor and a useful service. I've learned a lot in the process—I could easily write a book!"

—Dan Drobnis

**ECIA Board  
Work Study  
Meeting,  
Community  
Center, Mon.,  
Nov 14, 7 pm**



*Share your  
comments  
with us!*

*For policy and  
deadline, see  
below*

### Editorial Policy

*Vistas* invites opinions, ideas, stories, photos, and art from the community at large. Please include contact numbers for fact checking purposes. The newsletter will not publish unsigned letters or material deemed inflammatory. Material will be printed at the discretion of the editors. Letters over 150 words will be edited for fit. Community announcements are welcome; accompanying photos are welcome, too. **DEADLINE:** Newsletter deadline is the 3rd day of each month. Submissions can be dropped off or mailed to the ECIA office or emailed to [info@eldoradocommunity.org](mailto:info@eldoradocommunity.org). Please include "Attn: Vistas" in your message.

### Mission Statement

The mission of *Vistas*, the monthly newsletter of the ECIA, is to inform the Eldorado community about issues before the ECIA Board and the membership at large. By so doing, the publication seeks to foster increased neighborhood pride and community participation in the decision making process.

## Hydrant Needs

**W**HEN A HOUSE IN ELDORADO is on fire, or when there is a brush fire, it is critical that your volunteer fire department find the nearest fire hydrant quickly. Often our fire hydrants are surrounded by weeds or other growth, are difficult to see from the road and may even be difficult to get to through the weeds that have grown up around them.

You can help make your home, and that of your neighbors, safer by eliminating the weeds and growth from directly around the hydrant nearest your home. Two to three feet around the hydrant should be sufficient. If you have a weed trimmer, this will only take five minutes or so. If not, it may take longer to do it by hand, or with hand tools. It is well worth the time and trouble.

The object is to make the hydrant easily visible from the road, especially at night. Drive by the hydrant at night and see if it can easily be seen. If so, you have done a good deed for your neighbors, your fire department and yourself!

—Ernie Dunston

## Who Needs Ebay?

**M**Y HUSBAND THOM NEEDS A DESK for his computer. Even a small table would suffice. Did you know that the Eldorado Community website has a bulletin board where we can sell our stuff for free?

We checked out the website bulletin board, looking in the "Items for Sale" forum. There were no desks, but I noticed some end tables that we also need. I have a call in to David about that. Then I saw a telescope. Thom has wanted a telescope since he moved here, so I emailed the seller. I'm resisting making a call about the motor home...

Then I realized we need to sell our utility trailer. The trailer is great, but it's more suited for hauling 4-wheelers than the weeds and rocks we're taking to the dump these days. So, just as anyone else can do, I made a new topic on the bulletin board and entered the information. I also took a picture of the trailer and uploaded it to my personal website. The bulletin board



Photo by Lynn McPherson

## A Serious Problem

**O**n Friday, July 22, our silver tabby, Frankie, was shot with a high-powered pellet gun. The shot hit him in the left side, grazing his lung, lodging in his right side and causing extensive pain and bleeding..."

I received this letter from Ed and Jan Lurie, and have not had the opportunity to print it in its entirety. However, I feel that something needs to be said. In addition to this letter, a neighbor reported to me that his cat had been shot with a .22 last winter.

If you are having a problem with a neighbor's cat or dog, talk to that neighbor, and if that doesn't solve your problems, call animal control at 986-2430. And if your child has a pellet rifle or pistol, please make sure they understand the importance of any life, including that of a cat.

—Editor

lets you show any image you've put on the web, so I did that. It's easy (for instructions, go to [eldoradocommunity.org](http://eldoradocommunity.org) and click on the text at the top that says: *Click Here for Bulletin Board Instructions*).

The great thing about our bulletin board is that it's a free service available to all Eldorado residents, where we can sell our stuff, rent our homes, offer a barter, announce yard sales, list our lost and found items, etc. Recently, the bulletin board was upgraded so that the moderator gets an email whenever a posting is made. This reduces the gap between the time you post and the time you can see your post online. If you've been frustrated in the past, don't give up! We're working hard to make this bulletin board work well for everyone.

—Hope O. Kiab

designer of the ECIA website

If you have any suggestions about the bulletin board, feel free to contact Hope at [hope@webdesignbyhope.com](mailto:hope@webdesignbyhope.com).





## Ramadas and Similar Structures

**THE DRAFT OF THE NEW ECIA** Guidelines for Protective Covenants and Building Restrictions for Eldorado at Santa Fe has added a new section clarifying ramadas:

*The design of these structures shall be compatible with the principal residence and shall be made of wood. Their construction shall be with wood posts, wood beams spanning between posts with lighter cross wood members. Carved wood capitals, beam ends and the like may be incorporated when desirable and shall be finished with a clear or semi opaque natural finish of a color to blend with the principal residence.*

**History:** The freestanding ramada is the southwestern version of a gazebo. The Spanish gave us the name ramada for this structure. A ramada is an open, unattached portal that reflects the elements of the Spanish-inspired architecture. The ramada is ancient in this region and was used as a shade device to protect people from the intense high altitude southwest sun. In some cases, the ramada size can be very large and can help in the high desert where huge shade trees are not native.

Native people around the world have used a simple structure of four upright posts held together at the top by sticks tied from post to post forming a cube shape. They put branches on the top creating shade.

The Anasazi and Pueblos built and used these, and at some point built a ramada in a large pit and covered the cube with closely layered sticks reaching out to the edge of the pit and then applied mud over the sticks. The pit house and adobe-covered (mud plaster) walls were invented. This was a great moment in southwest architecture for that basic design and adobe has evolved and remains a fundamental part of our present day architectural style in Eldorado at Santa Fe.

If you are planning on building a ramada, please submit an architectural application for review by the Architectural Committee. They meet at 7 pm on the 2nd and 4th Tuesday of each month. Remember, try compliance first!

—Charles Smith, the ECIA CCR



A freestanding ramada.

PHOTO BY KEN MCPHERSON

## Your Roads

**WE USE ROADS TO GET FROM** one point to another, to get to work, to do the shopping, to take vacations and to bring emergency assistance. The importance of roads is obvious.

Eldorado falls within County Maintenance District 11, which has 295 miles of roadway and extends into the communities of Eldorado, La Cienega, Cerrillos, Galisteo and Glorieta. We have different types of roads here in Eldorado: dirt, chip sealed and asphalt. In fact, there are 79.80 miles of roadway in Eldorado that are county maintained. Eight county employees do all of the road blading, signs, pothole repair, tree trimming, mowing, culvert maintenance and installation, snow removal, cattle guard maintenance and installation and road maintenance emergencies. That's a big job.

Here in Eldorado we enjoy a rural atmosphere. The dirt road in front of your house is quaint until it rains or snows and it becomes a muddy slippery surface or a washboard surface. The question then arises, "why can't the county grade my road more often?" Quite simply, they don't have the resources

to do it more often.

The ECIA Road Committee continues to interface with the county on road maintenance here in Eldorado. One of our projects is the base course on our dirt roads. Some of the base course has not been replenished since Eldorado was developed in the late 1970s. The Road Committee has driven these roads and listened to complaints from residents. We have proposed a program of base course replenishing and submitted it to the county for their action. The committee is also looking at the culverts and working with the county on maintenance and improvement for better drainage.

The wants and needs for all those who enjoy the rural lifestyle of dirt roads and the conveniences paved roads provide will always be paramount in the decisions of your Road Committee. Why not join us. We are looking for residents who want to become involved with this community in which they live. We welcome your expertise. For information, call Ed Benrock at 466-2088.

—Ed Benrock

### ECIA OFFICE

#1 La Hacienda Loop  
Santa Fe, NM 87508  
466-4248, 466-4249  
info@eldoradocommunity.org  
www.eldoradocommunity.org

### General Manager

Bob Pritchard  
466-4248  
ECommunity@aol.com

### BOARD OF DIRECTORS

#### President

Jeanne Klein  
466-2466  
Jpkeducate@aol.com

#### Treasurer

Dan Drobnis  
466-4781  
Drobnisd@sdsc.edu

#### Director

Sandy MacGregor  
466-0882  
s.macg@earthlink.net

#### Director

Johnny Martinez  
466-0696  
Jmartinez54@comcast.net

#### Director

Andrea Cohen  
466-2541  
acmb@cybermesa.com

#### Director

Ed Benrock  
466-2088  
Francesed@msn.com

#### Director

Philip Balcombe  
466-2982  
pgbalcombe@cybermesa.com

### COMMITTEE CHAIRPERSONS

Finance: Gisela Knight  
Architecture: Bill Schwent  
Conservation: Steve Wust  
Stable: Dina Sassone  
466-2516  
Election: Vacant  
Road: Ed Benrock  
Information: Ken McPherson  
Neighborhood Watch:  
Sandra Vreeland

### VISTAS NEWSLETTER

#### Editor:

Ken McPherson  
466-4161  
kenzwork@hubwest.com

#### Designer:

Hope O. Kiah  
hope@webdesignbyhope.com

#### Editorial Assistants:

Lynn McPherson  
Debby Padilla  
466-4248

#### Photographer:

whitewolfvision.com  
466-2273

### COMMUNITY RESOURCES

Vista Grande Library

466-READ

Security

204-2945

Fire and Rescue

466-1204

Animal Control

986-2430

### November's Shoptalk

November's Artists' Shoptalk will be Wednesday, November 16, 10 am to noon, at the home of Lucia Sybert. Come meet fellow artists over coffee and conversation. For directions call 466-3721.

### Collectibles and Gifts on Sale

The 4th Annual Fall Arts and Crafts Show will be held in the El Dorado Elementary School's gymnasiums on November 5 and 6, from 10 am to 5 pm. Creativity knows no bounds with this year's group of 44 accomplished Eldorado Art Association artists. Stroll through the aisles of booths to visit with the artists. Admission is free. For a preview of the artists participating in this year's event go to [www.eldoradoarts.org](http://www.eldoradoarts.org).

The artists will donate a portion of their proceeds to the El Dorado Elementary School and the El Dorado Fire and Rescue Department. This event is sponsored by the Eldorado Arts and Crafts Association, a 501 C 4 non-profit organization. For membership call Janet Amtmann at 466-3256 or George Henke at 466-4988.

### Budget Hearing

All ECIA members are invited to attend the ECIA Board's annual budget hearing on Saturday, November 5, at 10 am in the Community Center's Railroad Station. The Finance Committee has prepared a budget recommendation based on input from the ECIA Board, the General Manager, committees and association members. Copies will be available at the ECIA office beginning Wednesday, November 2, for your review. Please come to learn about your association's financial plans, and to express any concerns or observations.

### Calling All Block Captains

The Eldorado Neighborhood Watch Committee invites all Neighborhood Watch Block Captains, and any resident interested in becoming a Block Captain, to our November 21 meeting at 7 pm in the Eldorado Community Center conference room. Refreshments will be served. We would like to present a comprehensive list of all

### Moon Phases for Nov



Neighborhood Watch Block Captains to the ECIA by year's end. If you are a Block Captain or are interested in becoming one and cannot attend this meeting, please call Sandra Vreeland, Chair of the committee, at 466-6079 to provide your name and the street for which you are captain.

### A High-Speed Commuter Train?

Concerned Residents of Eldorado want answers!!

How would a high-speed commuter train going through Eldorado impact our community? Where would a commuter parking lot be located? What are the potential safety issues? What about environmental impacts? How would a commuter train affect our taxes?

Come to the El Dorado Elementary School south gym Wednesday, November 9, from 6:30 to 8:30 pm. State and county officials will be on hand to discuss proposed plans that may bring a high-speed commuter train through Eldorado. We hope they will answer these questions and more for all concerned residents.

Decisions are being made that will affect all of us in Eldorado. Let your voices be heard and let your questions be answered. Be there!

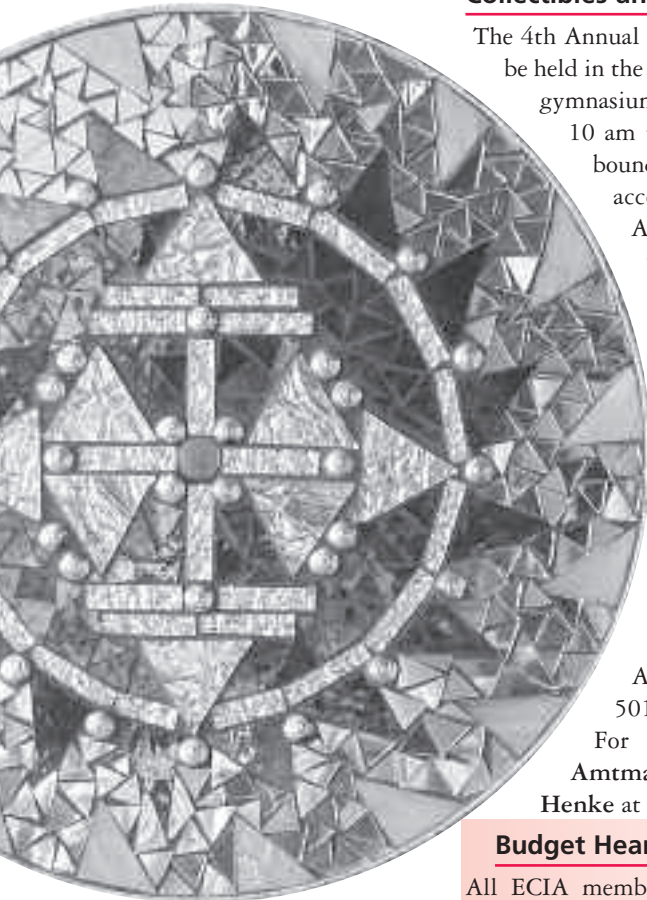
### Library Workshop

On November 9, 10 am, the Vista Grande Public Library will host an Alzheimer's Disease and Dementia Workshop with Jyette Lokvig, author of *Alzheimer's A to Z*, which is intended to provide concrete and immediate ways that a caregiver can help patients with Alzheimer's disease and dementia by looking at communication techniques, attitude, etc.

### EAWSO Survey

The Eldorado Area Water & Sanitation District Board of Directors has a strong commitment to community education and outreach. Now that we own the system, we feel it is imperative for residents within the community to be fully informed and involved in what we do.

One element of our communication plan is to include a monthly newsletter with each bill distributed to our ratepayers. We included a survey with a recent billing, asking residents what topics they would like us to cover in this newsletter. Your response to that survey has been



Reflections by Catherine Weser





## Astronomy Corner

### Buying a telescope

You can spend a fortune on high-end equipment, but armed with no more than a good astronomy guidebook and a modest telescope and binoculars you can enjoy sky watching.

Location, location, location. Choose your observing site—the darker the better. Clear skies and good “seeing” (a stable atmosphere) are a must.

Size matters, not power. The greater the aperture, the more light it can collect. Quality is the golden rule. A solid tripod and mount, good eyepieces and accessories ensure years and years of enjoyment. Just remember, the best telescope for a child (you) is the one you’ll use most often.

### Mars!

Do not miss Mars between October 25 and November 15. It will be the best viewing until July 26, 2018.

Recommendations: 8” telescope. Magnification: 150x to 300x. Filters: Yellow #15 and medium blue #80A for polar caps and clouds, red filter #25 and #23A for surface details.

November viewing: **Mercury**: not easily observed. **Venus**: low in SW after dark. **Jupiter**: low in ESE dawn twilight. **Saturn**: rises near 10 pm in ENE, high in S at dawn.

Next: Accessorizing your telescope.

—Juan Alvarez

Jalva88610@aol.com

overwhelming—we are still tallying the results and comments that so many of you sent in! We’ll announce the results shortly and, for those of you who did not respond to the paper version of the survey, we have posted an electronic version on our website, [www.eldoradowaterdistrict.com](http://www.eldoradowaterdistrict.com). The survey is on the “News” page.

# November Events

## Left out? Help us compile a comprehensive events listing.

Email [info@eldoradocommunity.org](mailto:info@eldoradocommunity.org) with your meeting/event information, or bring it to the ECIA office by the 8th of the month for publication in the following month’s *Vistas*. Please include “Attn: Vistas” and be sure to indicate:



- 1. Type of Event**
- 2. Location**
- 3. Date & Time**
- 4. A Resource Person** (one who can answer questions both about the event and the sponsoring organization) and his/her telephone number.

Photographs (digital or snapshots) are encouraged!

*Note: All meetings are at the Community Center, unless otherwise noted.*

**LR**=Living Room, **F**=Foyer, **CFR**=Conference Room, **CR**=Class Room, **RR**=Railroad, **K**=Kitchen

### NOVEMBER SPECIAL EVENTS

Finance Committee public budget meeting on Sat., Nov. 5 in RR

Thanksgiving Day ECIA offices closed Nov. 24 and 25

### COMMITTEE MEETINGS

Perform. Arts Assoc.	Tues., Nov. 1, 7 pm			RR
285 Coalition	Wed., Nov. 2, 7-9 pm	Kathy Pilnock	466-1598	CFR
Road Committee	Mon., Nov. 7, 6-7 pm	Ed Benrock	466-2088	CFR
Architectural Committee	Tues., Nov. 8, 7-9 pm	Bill Schwent	466-7708	CFR
Finance Committee	Wed., Nov. 9, 9am-noon	Gisela Knight	466-2568	CFR
EAWS&SD*	Wed., Nov. 10, 7-9 pm		466-2411	CFR
Board Work Study	Mon., Nov. 14, 7-9 pm	ECIA	466-4248	CFR
Stable Committee	Tues., Nov. 15, 7-9 pm	Dina Sassone	466-2516	CFR
ECIA Board	Thurs., Nov. 17, 7-9 pm	ECIA	466-4248	CFR
Neighborhood Watch	Mon., Nov. 21, 7-9 pm	Sandra Vreeland	466-6079	CFR
Information Committee	Mon., Nov. 21, 7-8 pm	Ken McPherson	466-4161	F
Architectural Committee	Tues., Nov. 22, 7-9 pm	Bill Schwent	466-7708	CFR
Stable Committee	Tues., Nov. 22, 7-9 pm	Dina Sassone	466-2516	CFR

### MONTHLY MEETINGS

Book Club	Sat., Nov. 12, 1:30-3 pm	Barbara Rugg	466-2559	
Book Club/Pot Luck	call for date and time	Ken Fischer	466-2537	
Library Book Group	2nd Thurs., 7-9 pm	Shelley Moore	466-9636	Lib
ERA Coffee Social	Tues., Nov. 1, 10-11 am	Joe Auburg	466-1484	F
Search & Rescue	Thurs., Nov. 10, 7-9 pm	Dave Burdett	466-9765	CR
Troop 414 Committee	1st Wed., 7:30-9 pm	Bruce Blossman	955-0880	CR
Venturing Crew 414	2nd & 4th Wed., 7-9 pm	Vera Hayduk	466-1726	C
Cub Scout Pack 414	4th Tues., 7-9 pm	Ty Ransdell	466-2579	Sm Gym
La Canada Wireless	Mon., Nov. 14, 7-9	lcwireless.org		LR
MOMS Club	Call for date and time	Shannon Ratcliff	986-9050	
ERA Coffee Social	Tues., Nov. 15, 10-11 am	Joe Auburg	466-1484	F, K

### WEEKLY MEETINGS

AA	Tuesdays, 5:45-6:45 pm			LR
AA	Wed., 10:30-11:30 am			RR
AA	Fridays, 6-7 pm			CFR
AA	Sat., 10:45-11:45 am			LR
AA	Sun., 5:15-6:15 pm			CFR
Boy Scout Troop 414	Wednesdays, 7-9 pm	Paul Tuck	466-4815	RR
Bridge	1st & 3rd Mon., 1-4 pm			LR
Bridge	1st & 3rd Fri., 1-4:30 pm			CR, LR
Bridge	2nd & 4th Fri., 1-4:30 pm	Pat Lavengood	466-9765	CR, LR
Bridge	Wednesdays, 9-noon	Nancy Rost	466-2832	LR
Community Band	Thursdays, 6-8 pm	Joel Hopko	466-8412	
Fire & Rescue Training	Wednesdays, 7-9 pm	Fire Station Office	466-1204	Station
Fire & Rescue Work Duty	Saturdays, Call for time	Fire Station Office	466-1204	Station
Senior Lunch**	Wednesdays, 12-1 pm	Therese Janowski	466-1397	CR
Knitting Club	2nd & 4th Tues., 10 am-noon	Joyce Hanmer	466-3018	F
Adult Volleyball	Wed., 7-9 pm	Arlene Mayer	466-6641	School

\*Eldorado Area Water and Sanitation District

\*\*Reservations Required

VISIT OUR WEBSITE: [www.eldoradocommunity.org](http://www.eldoradocommunity.org)

## *El Dorado Fire: The Tradition of Voluntarism*



Photo by Lynn McPherson

Home base for many El Dorado Fire and Rescue volunteers.

**T**HE FRENCH WRITER, ALEXIS DE Toqueville, who toured our country in 1830 and wrote knowingly about it ever after, never ceased to be amazed at the willingness of Americans to organize into groups and volunteer their time and talent to help their neighbors in danger or need.

In the tradition described by de Toqueville, “Eldorado’s Finest”—our Fire and Rescue Service—sent firefighters, emergency medical technicians and leadership elements (called “overhead” in emergency services parlance) to assist disaster victims in Louisiana, Mississippi and Texas following hurricanes Katrina and Rita.

Chief Guy Monroe of El Dorado Fire and Rescue (EFR), noting that some of his volunteers had not yet returned from duty in the states affected by the greatest natural disasters to strike the US in its history, proudly identified the volunteers who have returned.

Lt. Steve Mullis was one of the first to be sent into the disaster area. He was given the dangerous task of leading debris removal teams in the affected area. Karen Logan, a member of both EFR and the state’s Disaster Medical Assistance Team (DMAT) was sent to Beaumont, Texas to take over an emergency room damaged during Hurricane Rita.

EFR member, Wayne Luttrell, who is both a firefighter and an emergency medical technician, at first traveled to Mississippi because his parents were living in the direct path of the hurricane and he was not able to contact them. Unable to fly into the most afflicted area, Wayne managed to get one of the last flights into Pensacola, Florida, and from there managed with some difficulty to get to his parents home in Long Beach, Mississippi. Long Beach and many other beach communities in that state were, in his

words, “wiped off the map.”

The devastation seen by the EFR volunteers had to be seen to be comprehended. No stores of any sort were open in the areas in the path of the hurricanes. Visualize our community, its houses flattened, with no communications, water, food, medical care and no one to respond if one could call 9-1-1. One poignant memory etched in the minds of those who have returned from the disaster area was the sight of people whose cars had run out of gasoline in an attempt to get away from the storm’s fury and were stranded, living in their cars at gasoline stations that were no longer functioning.

Lt. Mullis, who works full time as a senior official for the New Mexico Department of Forestry out of Bernalillo, reported that two things characterized the response to the disaster: a huge quantity of aid of all sorts,” and “confusion.” Trucks with disaster assistance supplies were lined up on roads leading to the stricken area but had no place to go. Mullis’s debris removal team, ready to go to work in what appeared to be a never-ending task, was not permitted to start work until officials were certain it had the proper protective gear.

Karen Logan of the DMAT felt that her team was needed and well-employed. Commenting that although she had never liked Wal-Mart, she had to agree that that company was one of the first on the scene with aid for those in need in the most affected areas.

Wayne Luttrell, who worked as a volunteer with the local Red Cross and Salvation Army in what was left of his parent’s hometown, commended the work of those organizations in the disaster. He reserved particular praise, however, for the faith-based communities in the states bordering the hurricane-devastated areas. He was particularly struck by the rapidity of help that came from churches, especially the Baptists who were first on the scene providing the basics of life to victims and giving them needed hope and comfort.

Although I didn’t get a chance to talk to them, Marj Mizerak, Barbara Wolff and Kitty Wood (firefighters and paramedics with El Dorado Fire and Rescue) were also part of the El Dorado contingent to assist hurricane victims.

Alexis (de Toqueville), you were right! You marveled at Americans’ penchant for voluntary service to their communities and to causes in which they believe. Protecting the less fortunate and helping people in emergencies is a belief alive and well in Eldorado, most particularly in the group of volunteers who comprise El Dorado Fire and Rescue.

—Frank Schober

## Your Family's First Aid Kit

**DO YOU HAVE AN ACTIVE FAMILY?**

If you answer yes, your family should be prepared with a first aid kit. Many commercially packaged first aid kits contain basic supplies, but are unable to deal with specific family needs.

The answer is to create your own custom-made kit that fits your family's first aid needs. Here's how to get started.

1. List the types of activities your family participates in.
2. Decide what supplies best fit your family's needs, such as bandages and ointment for cuts, ice pack for pain and swelling, and sunscreen for sunburn.
3. Find a roomy, insulated tote for your supplies. Why insulated? Because you need to have frozen, reusable ice packs on hand. Ice therapy is the most recommended and effective treatment for many injuries, but it needs to be applied immediately after an injury occurs to lessen pain, reduce swelling and treat bruising.

Suggested supplies to include in your active family's first aid kit:

**Information:** First aid guide or manual

**General:** Matches, scissors, travel toilet paper, anti-diarrheal, antiseptic wipes, tweezers, needle (for splinters), thermometer, safety pins, flashlight, disposable gloves, mouthpiece (in case of using CPR), blanket, plastic zip-lock bags (to keep supplies dry),

and tissues

**Emergencies:** Cell phone, whistle, personal alarm, pepper spray, emergency phone numbers, and maps (with directions to nearest first aid)

**Pain and swelling:** Cold pack and Ibuprofen

**For cuts, scrapes, blisters:** Bandages of different sizes, antibiotic cream or hydrocortisone cream, mole skin dressing kit, sterile gauze, adhesive tape, antiseptic solution, and non-stick gauze pads

**Sun protection/heat exhaustion:** Misting water bottle, cold pack, sunscreen, lip balm, and aloe vera lotion

**Fractures, strains, sprains, pulled muscles:** Neoprene joint braces, compression bandage/ice wrap, cold pack, and two triangle-shaped pieces of cloth for a sling or tourniquet

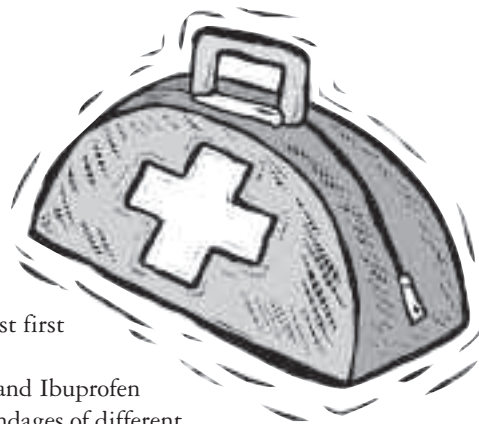
**Dehydration:** Filled water bottle and sports drink

**Allergic reactions:** Calamine lotion, epinephrine (for bee stings), antihistamine, and recommended medications

**Insect bites:** Epinephrine (for bee stings), insect repellent, and cold pack (reduces swelling of bug bites)

*Disclaimer: This information is not intended as a substitute for professional medical treatment or consultation.*

—Louise Roach, Editor of on-line health and fitness newsletter, *NewsFlash\*SnowPack*.  
<http://home.netcom.com/~newsflash/>



## Pavilion Discussions Continue

**REPRESENTATIVES OF THE ECIA**

Board and the Eldorado Performing Arts Association are continuing discussions on a pavilion or other venue for concerts and other performances within Eldorado. Of the 130 responses received from a survey included in the September Vistas, 52% of the respondents favor an enclosed, multi-use facility, while 13 respondents (11%) were opposed to any type of structure. Sixty-one respondents indicated interest in helping construct the pavilion and 40 indicated interest in helping pay for additional materials and equipment. Eighty-eight percent said they would attend performances at the pavilion either on occasion or regularly, and 27 respondents indicated they would put on or produce performances at the pavilion.

The ECIA Board has appropriated up to \$55,000 for such a facility, and a steering committee is working to develop a plan that fits within this budget, accommodates the needs of potential performers and audiences and takes into consideration the acoustic

concerns of nearby residents.

Currently under consideration is a rectangular building that will be 44' across and 28' deep with the ceiling rising from 16' in the rear to 22' at the front. There will be an inner acoustical wall 28' long about 6' in from the back wall, creating an acoustical barrier at stage rear and allowing for a 6' backstage aisle. Acoustical paneling angling from the end of the inner acoustic wall to the corners of the stage will help to project sound outward. The building would be enclosed in inclement weather by a barn door across the front of the stage. Straw bale construction is also being investigated for better weather and acoustical insulation.

The pavilion is larger and its shape and materials are more complicated than that originally contemplated. Estimates are being sought to determine the effect upon cost. The Board has not yet approved any particular site or orientation, and has not committed to any additional funding.

—Dan Drobnis

*Security*  
*204-2945*

## *From the Ordinary to the Unique*

The Eldorado Residents Association (ERA) pulled off another great Flea Market last September. The weather cooperated and allowed a beautiful day for eighty-four vendors and the multitude of shoppers who flocked to the Community Center in search of the perfect buy. The ERA donated the proceeds from the event (\$500) to community organizations, part of that money coming from the 26 dozen donuts sold!

—Ken McPherson



Photo by Hope O. Kiah

You have to get to the flea market early to find a treasure like this!