

ELDORADO at SANTA FE VISTAS

VOLUME XVII, ISSUE 11

November 2015

IN THIS ISSUE

ECIA News	2-3
In the Community	4-5
Library News	6
Native Plants	7
Solid Waste Pilot Project ..	7
Recycling News	8
Tax Increase	8

Monthly Newsletter of the Eldorado Community Improvement Association

ECIA, 1 La Hacienda Loop, Santa Fe, New Mexico 87508 ▼ (505) 466-4248 ▼ www.eldoradosf.org

Some Assessment Comparisons

Every two years, the ECIA Bylaws allow the Association to raise its assessment, and 2016 is such a year. In order to maintain its Community Center and other amenities as they age, and allow for inflation in operating expenses, it is extremely likely that the Association's assessment will need to be raised for 2016.

To keep any such increase in context, it is useful to consider how the ECIA's annual assessment and amenities compare with some immediate neighbors in the south 285 corridor. Annual figures for 2015 are shown below (at right).

Eldorado's secret for offering outstanding amenities at reasonable cost is threefold:

- ▼ Our large size—one of the largest HOAs by membership in New Mexico—provides significant economies of scale;
- ▼ An active volunteer community helps hold down operating costs; and
- ▼ Santa Fe County bears the costs of maintaining Eldorado roads.

The Finance Committee is continuing its review of the 2016 ECIA Operating Budget, including transfers to the Capital and Reserve/Replacement funds and decisions on 2016 maintenance expenditures. This will determine, among other things, the 2016 assessment in the budget that the Committee recommends to the Board. Long-term maintenance needs, potential additional projects, and rising operating costs will likely result in a recommended assessment increase in 2016.

Even with an increase for 2016, Eldorado will continue to provide an outstanding community value.

Dan Drobnis, ECIA Finance Committee

*ECIA Board Meeting,
Community Center
Railroad Bldg.
Thurs.,
November 19,
7 PM*

Association	Commty Center	Wilderness	Hike/Bike Trail	Pool	Play-ground	Tennis Courts	Basketball Courts	Assessment
ECIA	Yes	4000 ac	12.5 mi	Yes	2	2	1.5	\$400
Alteza	No	No	No	No	No	No	No	\$700
Belicia	No	No	No	No	No	No	No	\$700
La Paz	No	No	No	No	No	No	No	\$350
Tierra Colinas	No	No	No	No	No	No	No	\$325
The Ridges	No	No	No	No	No	No	No	\$650
Spirit Wind	No	No	No	No	No	No	No	\$650

Guessing at Groundwater: Time to Go Regional?

WATER MATTERS PART 3

At the September 28 Eldorado Area Water and Sanitation District's (EAWSD) public rate hearing, a former District board member commented that Eldorado's water supply was plentiful but that getting it out of the ground was the problem. Speculating about how much water lies beneath our feet, however, is just that—speculation. Determining whether there's plenty of water to supply the District's nearly 3,000 connections is more than a little complicated.

Opinions about how much groundwater the District can access depends on whom you ask and which engineer-conducted study you consult. Back in 1970, Howard Friedman, the president of AMREP, Eldorado's developer, was saying, "Lots of water." His opinion came from studies paid for by AMREP. However, Zane Spiegel, the state hydrologist at the time, said of the proposed subdivision, "Not anywhere near enough water."

There can be no argument that the District relies mainly on groundwater drawn from wells sucking from aquifers. An aquifer is "any geological formation containing or conducting groundwater." Currently, the District owns 15 production wells located in four aquifer groups. Of those, only four are termed "major" producers, and one, located in the Galisteo Group Creek alluvium, yields water only in years with seasonal runoff. At about \$1 million a pop, the District has to be most judicious when it comes to drilling a new well.

In 2006, the District hired Glorieta Geoscience, Inc (GGI) to conduct a hydrological study. GGI turned in a paper in 2007 titled "Long-Term Water Availability and Well Field Management Study Report." It draws from "previous data and technical reports to assess the local hydrology and water availability."

Full of charts and graphs, GGI's 80-page report tries to answer three questions:

CONTINUED ON PAGE 6 >>



**Share your
comments
with us!**

*For policy and
deadline, see
below*

Editorial Policy

Vistas welcomes your ideas, stories, photos, and art. Please include full name and contact information. The newsletter will not publish material deemed inflammatory, biased, or inappropriate. Submissions will be selected and edited at the discretion of the editor. Community announcements are welcome as well, along with accompanying photos.

DEADLINE: Newsletter deadline is the 5th day of each month. Submissions can be dropped off or mailed to the ECIA office or e-mailed to diana@eldoradosf.org. Please include "Attn: Vistas" in your message.

Mission Statement

The mission of *Vistas*, the monthly newsletter of the ECIA, is to inform the Eldorado community about issues before the ECIA Board and the membership at large. By so doing, the publication seeks to foster increased neighborhood pride and community participation in the decision making process.

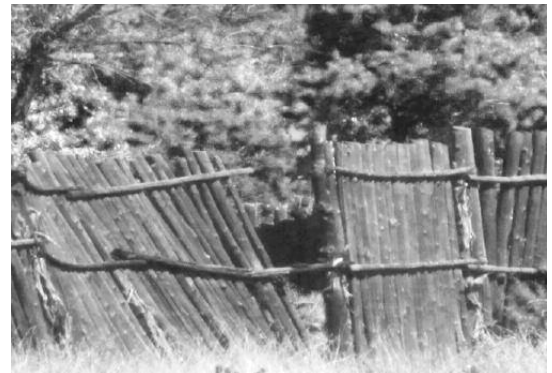
Taking Care of your Home

Many of the homes in Eldorado were built over 30 years ago, which means that quite a few of them have not had the consistent loving care they deserve and are currently in some state of disrepair. The amount and types of disrepair vary from peeling stucco to fences falling down to trim areas or doors badly in need of a fresh coat of paint. Because such homes are unsightly, and certainly do not help to preserve the overall property values of homes in Eldorado, we at the ECIA are taking this issue seriously, especially in light of the fact that preservation of property values is a key goal noted in the first line of our Covenants:

Amended and Restated Protective Covenants and Building Restrictions for Eldorado at Santa Fe

This Amended and Restated Declaration (hereafter "Restated Declaration") is made by the Eldorado Community Improvement Association, Inc., a New Mexico non-profit corporation (hereafter "the Association" or "ECIA"), for the express purposes of protecting the natural beauty and environment of the community of Eldorado at Santa Fe, providing an attractive rural setting for residential neighborhoods and home sites and *preserving property values*.

Additionally, if any fences or accessory structures are in disrepair and are unsightly to the neighbors, they can be considered a violation of Section 14 of the covenants which is detailed as follows:



Don't let your home fall into disrepair. Keep your exterior trim painted and your fences upright!

Section 14. Nuisances-Clause.

No lot shall be used in any way for the storage or dumping of trash or debris, nor for any purpose which may endanger the health of, or unreasonably disturb, other lot owners, or which creates or constitutes a nuisance. *No unsightly or offensive objects shall be erected, placed, stored or permitted to remain on any lot, nor shall any lot be permitted to appear in an unclean or untidy condition.* Construction sites must be maintained in a clean and orderly fashion; litter, trash and construction debris, when retained on site, shall be stored in covered containers. All construction debris shall be removed from the site and disposed of in an appropriate manner. No activity shall be conducted, nor equipment or process used, nor substance or animal kept which emits foul or obnoxious odors, or which creates noise, glare, fumes or electrical interference.

In keeping with these covenants, we urge all homeowners to take care of their homes, a most valuable asset, by addressing any visible signs of neglect and aging. Please remember, however, that *any permanent modifications or improvements that are outside of the house will require the approval of the ECIA Architecture Committee.*

Thank you for your efforts in maintaining your home and helping to keep Eldorado a beautiful place to live and, in doing so, preserving overall property values. If you have any questions at all, please feel free to contact me, Mark Young, at the ECIA at 466-4248 or e-mail me at mark@eldoradosf.org.

—Mark Young, Covenant Compliance Representative

Architecture Committee Needs You!

The ECIA Architecture Committee has immediate openings for two new members. Ideal applicants should have some knowledge or experience in planning and/or zoning as well as at least a basic understanding of building concepts and archi-

tectural design. Interested applicants should submit a cover letter and resume to the ECIA to the attention of the ECIA Architecture Committee, c/o Mark Young, Staff Liaison.

Message from the ECIA Board

It is budget season for the Board and ECIA committees. Recommendations for repairs, upgrades, and improvements are made by each committee and presented to the Finance Committee for consideration along with suggestions from residents throughout the community. The draft budget that comes out of this process is presented to the Board for review. Changes that the Board suggests are included in a second draft which is made public and will be presented at a forum for ECIA members on Monday, December 7 at 7 PM. The budget then goes back to the Board for final approval at its regular meeting on December 18.

An important consideration each year is whether to increase members' annual assessments, and if so, by how much. While budgets over the past few years have been sufficient to maintain our amenities in prime condition, we have not been able to set aside sufficient funds to reach a five-year reserve target. Whether an increase should be adopted for the coming two-year cycle is one of the critical questions to be answered in this budget process. (See article on p. 1.)

In making decisions that affect every member of the ECIA, it is essential that the Board have input from a broad spectrum of the membership. It is also important that member views be represented on the Board itself. It is not too early for members to be thinking about running for the two Board positions that will become open early next year. Serving on the ECIA Board can be a rewarding experience, providing an opportunity to interact with the thousands of talented and interesting people who live in our community.

Our transition to professional management through HOAMCO continues to run smoothly. Our first general manager under this arrangement left to pursue other opportunities, but HOAMCO has remained actively in charge of operations. Our current interim general manager, **Brenda Leonard**, has quickly immersed herself in every aspect of the day-to-day operations of the association. We look forward to working closely with her and other HOAMCO officials to maximize customer service and efficiency at the ECIA.

—ECIA Board of Directors

Recent Board Actions

An Executive Session meeting, with all Board members present, was held on October 7, 2015. A single motion from this meeting was read into the record of the regularly scheduled ECIA Board meeting on October 15, 2015. A resolution was passed for the ECIA to begin negotiations with HOAMCO to establish a process for all current and future ECIA employees to report to HOAMCO. The motion passed with 6 ayes and one nay (**Dag Ryen**).

Attending the October 15 meeting were **Pam Henline** (Vice-President), **Jeanne Calzada**, **Todd Handy** (Treasurer), and **Antone Forneris**. Three Board members had excused absences.

At this meeting, two resolutions were passed unanimously:

- ▼ The Board approved the Finance Committee's recommendation to accept the proposed contract from Thad E. Porch, CPA, to conduct the 2015 Audit and 1120H tax return, with the proposed fee of \$7,900, excluding GRT.
- ▼ The Board accepted the ECIA staff's request to transfer an amount not to exceed \$14,719 from the Reserve Replacement funds for 2016 to the current Budget year of 2015, in order to replace the Ford Escape sports utility vehicle with a 2012

Subaru Impreza sedan, the amount determined per the submitted bid proposal/invoice.

Regular Board meetings are conducted on the third Thursday of each month at 7 PM at the Community Center and are open to the public. An open forum and community announcements are normally included. Complete minutes and meeting agendas are available at the ECIA offices and on its website: www.eldoradosf.org. The Board also holds working sessions at 6 PM on the Mondays preceding the regular Board meeting.

CHANGE IN ECIA OFFICE HOURS

ECIA office hours will change beginning November 16. Offices will be closed from 12 noon to 1 PM. All others hours will remain the same.

ECIA OFFICE

#1 La Hacienda Loop
Santa Fe, NM 87508
466-4248, 466-4249
www.eldoradosf.org

BOARD OF DIRECTORS

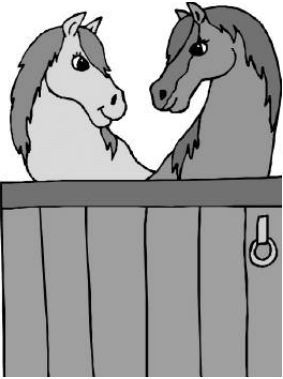
President
Dag Ryen
D.Ryen@eldoradosf.org
Vice-President
Pam Henline
P.Henline@eldoradosf.org
Secretary
Greg Colello
G.Colello@eldoradosf.org
Treasurer
Todd Handy
T.Handy@eldoradosf.org
Director
Jeanne Calzada
J.Calzada@eldoradosf.org
Director
Antone Forneris
A.Forneris@eldoradosf.org
Director
David Yard
D.Yard@eldoradosf.org

COMMITTEE CHAIRPERSONS

Architecture:
Katherine Mortimer
Conservation: Jim Daniel & Cherry Payne
Election: Kathie Graham
Facilities & Grounds:
John Calzada
Finance: Dan Drobni
Information: Frank Schober
Roads: Felicia Probert
Stable: Open

ECIA STAFF

General Manager (Interim)
Brenda Leonard
466-4248
gm@eldoradosf.org
Covenant Compliance Rep
Mark Young
466-4248
mark@eldoradosf.org
VISTAS NEWSLETTER
Editor & Designer
Carol Leyba
466-1158
cbsleyba@comcast.net
Webmaster:
Jack Arnold
webmaster@eldoradosf.org
Editorial Assistant:
DiAna Gutierrez
466-4248
diana@eldoradosf.org
COMMUNITY RESOURCES
Vista Grande Library
466-READ
Fire and Rescue
466-1204
eldoradofireandrescue.org
County All Purpose
820-CNTY (2689)



Model Railroaders Meet

Model railroaders will meet on Wednesday, November 11, at 7 PM at La Tienda's Performance Space. This is a regular meeting of the Santa Fe Model Railroad Club, the area-wide hobby group for model railroaders in all scales. Eldorado model train lovers are especially invited to attend, meet the members, and find out more about their activities. The Club recently set up the train show at the County Fairgrounds over the Columbus Day weekend, and will also operate First National's Holiday Trains in December at the Plaza in Santa Fe. Refreshments will be available, and all train lovers are warmly welcome.

Happy Thanksgiving!



Open House at the Stables November 28

Bring your families on the Saturday after Thanksgiving for a few hours of fun at the Eldorado Stables. There will be demonstrations, educational information about horses, opportunities to pet the horses, homemade refreshments, and photo opportunities. Sadly, we will not be able to offer pony rides this year, as our gentlest ponies have either become too old or have passed on to greener pastures. Saturday, November 28, from 11 AM to 1 PM.

November Budget Development Meetings

The Finance Committee continues development of the ECIA's 2016 Budget. An assessment increase will very likely be necessary to provide a larger contribution to Replacement Reserves for amenities. A complete meeting schedule was published in the September *Vistas*; all ECIA members are welcome to these November meetings:

Monday, Nov. 16, 9:30 AM: The Finance Committee adopts a final recommended budget and Budget Message at its regular monthly meeting. Venue: Conference Room.

Monday, Nov. 16, 6 PM, followed by Board working meeting: Joint meeting of the ECIA Board and Finance Committee. Committee chairs and residents are invited for information or to further explain their budget requests if desired. Venue: Conference Room.

Architecture Committee Seeks Members

Do you have an interest in the architectural modifications going on in your community? The Architecture Committee is looking for two new members to join their committee. They meet twice a month, and if this looks like something you'd be interested in, please call **Mark Young** at 466-4248 with any questions. This is a fun group to work with, and their site visits can be very interesting and educational.

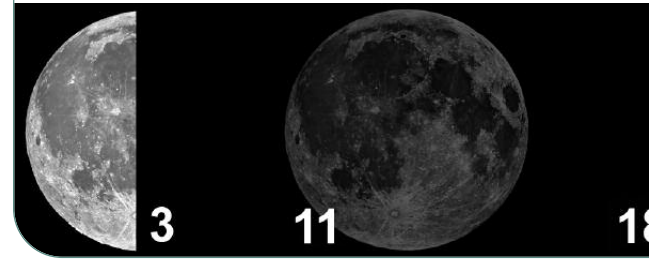
Attention Eldorado Renters

Are you a new renter here in Eldorado? Do you have questions about your covenant-controlled community? Visit eldoradosf.org or call the office at 466-4248 and ask for **Mark Young** before you build that dog run or new garden fence. Is the neighbor's dog keeping you up at night? What to do with all those moving boxes and trash? Call us at 466-4248. We're happy to answer all your questions or get you in touch with someone who can help you. Come in and visit with us at the Community Center. We'll make sure you receive the newsletter. Our offices are open 8-5, Monday through Friday and some evenings.

Reel New Mexico, November 12

Screening on Thursday, November 12 at 7 PM at La Tienda's Performance Space is *What's Cooking?* (2000, 109 minutes). London-based director Gurinder Chadha brings attention to the divergence and unity of our

MOON PHASES FOR NOVEMBER

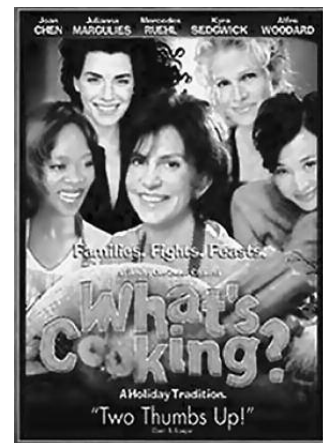


ethnic melting pot at Thanksgiving in this vibrant homage to family.

Four families prepare turkey dinners and struggle to come to terms with the secrets, generational disagreements, and alternative lifestyles that threaten to spoil their celebrations. The African-American Williamses are having a nouveau cuisine dinner, much to the disapproval of a criticizing mother-in-law. Elizabeth Avila (Mercedes Ruehl) is cooking her first Mexican banquet as a single woman. The Jewish Segals are trying to understand their lesbian daughter (Julianna Margulies), while the Nguyens prepare a Vietnamese spread and try to shut out the fact that their son is involved in something that will intrude on all the families' festivities.

Funny but sharply observed, cleverly resolved without being neat, *What's Cooking?* provides a quartet of compelling, resonant, and superbly acted tales for the price of one, plus a mouth-watering visual feast of culinary delights. Although this is a fine ensemble cast, top marks go to Alfre Woodard and Ms. Ruehl as very different matriarchs. Woodard's elegant, compressed businesswoman trying to cook up a storm and battle against her mother-in-law for familial supremacy is a master-class in dignity, while Ruehl embodies poised female liberation and vitality as a woman relearning to enjoy herself.

Like a good meal, *What's Cooking?* is a combination of fresh ingredients mixed together with skill to create a well-balanced harmony of diverse flavors. Delicious.



EMBER 2015



ASTRONOMY CORNER

November 2015

November 7, 8 - Leonids Meteor Shower. The Leonids is an average shower, producing up to 15 meteors per hour at its peak. This shower is unique in that it has a cyclonic peak about every 33 years, where hundreds of meteors per hour can be seen. The last of these occurred in 2001. The Leonids is produced by dust grains left behind by the comet Tempel-Tuttle, which was discovered in 1865. The shower runs annually from November 6 to 30. It peaks this year on the night of the 7th and morning of the 8th. The first quarter moon will set shortly after midnight, leaving fairly dark skies for what could be a good show. Best viewing will be from a dark location after midnight. Meteors will radiate from the constellation Leo, but can appear anywhere in the sky.

—From seaandsky.org

Changes Near You?

Have any of your neighbors submitted architectural modification plans to the ECIA for approval? What changes to the built landscape are being considered near you? Check out the Architecture Committee agenda at <http://tinyurl.com/ldjmreo> or the ECIA Board agenda at <http://tinyurl.com/lkxxdmw>.

November Events

Left out? Help us compile a comprehensive events listing.

Email diana@eldoradosf.org with your meeting/event information, or bring it to the ECIA office by the 3rd of the month for publication in the following month's Vistas. Please include "Attn: Vistas" and be sure to indicate:



1. **Type of Event**
2. **Location**
3. **Date & Time**

Photographs (digital or snapshots) are encouraged!

Note: All meetings are at the Community Center, unless otherwise noted.

CC=Community Center, LR=Living Room, F=Foyer, CFR=Conference Rm, CR=Classroom, RR=Railroad, K=Kitchen

SPECIAL EVENTS

Finance Committee	Mon., Nov. 16, 9:30 am	Final Recommended Budget	CFR
Finance Committee	Mon., Nov. 16, 6:00 pm	Final Recommended Budget	CFR
ECIA Offices Closed	Thurs. & Fri. Nov. 26 & 27		
Stable Open House	Sat., Nov. 28, 11 am–1 pm		Stable

COMMITTEE MEETINGS

Architecture Committee	Tues., Nov. 10, 7-9 pm	Mark Young	466-4248	Foyer
Architecture Committee	Tues., Nov. 24, 7-9 pm	Mark Young	466-4248	Foyer
Board Work Study	Mon., Nov. 16, 6-8 pm	ECIA	466-4248	CFR
Conservation Committee	Tues., Nov. 3, 7-9 pm	Jim Daniel	609-941-4527	F
ECIA Board Meeting	Thurs., Nov. 19, 7-9 pm	ECIA	466-4248	RR
Election Committee	Wed., Nov. 11, 2-4 pm	Kathie Graham	466-2133	CFR
Facilities & Grounds	Wed., Nov. 4, 4-6 pm	John Calzada	466-1947	CFR
Finance Committee	Mon., Nov. 16, 9:30-11:30 am	Dan Drobnis	466-4781	CFR
Information Committee	Mon., Nov. 23, 7-9 pm	Frank Schober	310-8593	F
Road Committee	Mon., Nov. 2, 6-8	Felicia Probert	466-1563	CFR
Stable Committee	To be determined	Alice Griffin	795-6424	CFR

MONTHLY / SEMI-MONTHLY MEETINGS / BIMONTHLY

EAW&SD*	1st & 3rd Thurs., 7-9 pm	Anna Mondragon	466-1085	RR/CR
Eldorado Arts & Crafts	Last Thurs., 7 pm	Mary Fredenburgh	466-1035	CR
Eldorado Book Club	3rd Wed., 3:00 pm	Susan Aylward	shaylward@gmail.com	
Eldorado/285 Recycles	2nd Tues. of month, 4-6 pm	Karen Sweeney	466-9797	CFR
Library Book Group	2nd Sat., 9-10:30	Joan LaMarque	466-6000	CFR
Roadrunner RV	3rd Tues. of month	Gordon Groff	699-7680	
Search & Rescue	2nd Thurs., 7-9 pm	santa fe sar.org	Moved to VGPL	

WEEKLY MEETINGS

AA	Tues., 5:45-6:45 pm			CFR/LR
AA	Wed., 7-8 pm			CFR
AA	Thurs., 6-7 pm (Women Only)			CFR
AA	Fri., 6-7 pm			CFR/LR
AA	Sat., 10:45-11:45 am			CFR
AA	Sun., 5:15-6:15 pm			Moved to La Tienda
Adult Basketball	Thurs., 6:30-Dusk			CC Courts
Boy Scout Troop 414	Wed., 7-9 pm	Fritz Denny	466-4070	RR, CR, LR
Bridge	1st & 3rd Fri., 12-4:30 pm	Jackie Vaughn	466-2558	LR
Community Church**	Sun., 9:00 & 10:30 am	David McPherson	466-2495	La Tienda
Eldorado Hikers	Tues., 8:30 am	Terry Gibbs	466-6914	CC
Eldorado Writers Club	2nd & 4th Tues., 7-9 pm	Randy Schultz	505-220-4327	CFR
Fire & Rescue Training	Tues., 7-9 pm	Fire Station Office	466-1204	Station
Fire & Rescue Duty Sections	Sat., 8-12 noon	Fire Station Office	466-1204	Station
Knitting Club	Tues., 10-12 noon	Joyce Hanmer	466-3018	LR
Life Drawing	Mon., 10-12 noon	Jack McCarthy	466-9601	RR
Mah Jongg	Fri., 1-5 pm	Nancy Robbins	466-1780	CR
Overeaters Anon	Mon., 7-8 pm	Barb	954-1533	LR
Senior Lunch***	Mon.-Fri., 11:30-12:30 pm	Senior Center	466-1039	
Spinning Group (Fiber)	1st & 3rd Thurs., 9:30-11:30	Ellen Higgins	970-201-4776	LR
Square Dancing	Fri., 6-9 pm	Connie Walters	466-4226	RR

* Eldorado Area Water and Sanitation District

**For other religious/spiritual services, go to <http://santafe.areaconnect.com/churches.htm>

*** Reservations required

VISIT OUR WEBSITE: www.eldoradosf.org



At the Library

This month marks one year since the library's newest addition opened. What a difference having so much more space has made. The library has been able to accommodate more patrons' wishes and offer more programs and services.

Book Sale: The Fall Book Sale is scheduled for November 11, 12, and 13, at the library. The hours are 12 to 6 PM on the 11th and 12th, and 10 AM to 4 PM on the 13th. This will be a great time to stock up on winter reading materials and do some early holiday gift shopping. There will be adult fiction and nonfiction, children's books and young adult materials, along with some DVDs, audio books, CDs, and a few miscellaneous items. The book sale is a fundraiser for VGPL and will help buy new materials, fund programs, and cover other expenses that help VGPL continue to provide free services to the community.

Programs: Story Time for toddlers and preschoolers will continue to meet on Friday mornings at 11:30 AM this month, except for Nov. 27. The Wags and

Words dogs come in on Wednesday and Thursday afternoons to be read to by children. Parents should contact library staff to check on open appointments if they have an interested child. The new Lego Club will meet on Tuesday, Nov. 15, from 3 to 5 PM. This is free and open to all master builders and their families.

Family Movie Night will be on Friday, Nov. 20, at 7 PM. Contact the library for information on any of these events, at 466-7323 or see the website at www.vglibrary.org.

Support VGPL: The Fall Donor Appeal begins this month. Like the book sale, these donations keep the doors open, the collections current, and the programs flowing. Please watch for a letter in your mailbox mid-month, or donate online: just click the Donate! button on the library's home page (www.vglibrary.org). VGPL deeply appreciates the generosity of the Eldorado community.

Holiday Closings: VGPL will be closed Nov. 26–27 to celebrate Thanksgiving. The library will be open normal hours (10 AM to 4 PM) on Saturday, Nov. 28.

—Tracey Mitchell

Water Matters, *continued from p. 1*

1. Is there sufficient recoverable groundwater in storage in the aquifer underlying Eldorado to meet the needs of its existing customer base (600 acre-feet per year [afy]) for a period of at least 100 years?
2. To what extent will District wells have to be repaired, deepened, and replaced or new wells added to maintain an acceptable, reliable level of service?
3. Can the aquifer and wells sustain higher levels of production needed to meet higher future demand?

Citing a 2001 study by John Shomaker and Associates, Inc., GGI inferred that "there is more than sufficient groundwater in storage in the aquifers underlying Eldorado and the surrounding area to sustain a demand of 1,000 afy to at least the year 2100." And yet, GGI hedges on their inference by adding, "However, due to the very slow rate of groundwater movement, the main EAWSD well field will be pumped at a rate that exceeds the aquifer's ability to replace the pumped water and as a consequence, EAWSD's wells will continue 'mining' the aquifer groundwater."

The GGI report then goes on to identify Wells #9 and #10 that "are not located within the previously identified aquifers (being mined) but are located next to Galisteo Creek in the saturated alluvium that is rapidly replenished by recharge. However, there is very little groundwater in storage in the alluvium, and recharge is seasonally limited and susceptible to drought." Nowhere in its report does GGI mention climate change and the increased water demand that might result.

Those considering Eldorado's future water needs have long realized that relying exclusively on our

aquifers had real limitations. There is political consensus that tying the EAWSD water system into a regional one is going to be part of the solution. During the 2014 NM Legislature, our State Senator Peter Wirth unsuccessfully requested \$1.02 million "to design and construct an interconnection between the EAWSD's water system and the proposed Santa Fe County regional water supply pipeline in Santa Fe County."

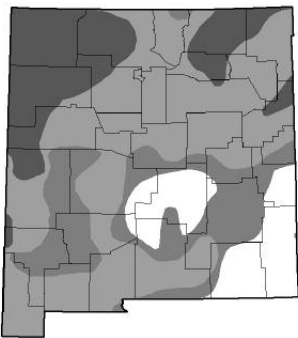
In spring 2014, the water board, anticipating the possibility of connecting to a "proposed" County system, spent enormous energy successfully applying to the New Mexico Water Trust Board for \$400,000. Unfortunately, when the time came for the Trust to award the project's funds, there was no project. The County had yet to provide a system with which to connect, and so the Trust Board money evaporated (no pun intended).

Besides the lack of actual County-provided pipes in the ground, EAWSD and the County have yet to agree on when and how much the District will pay for the water. The County has asked that the District buy a certain amount of water for a certain price every month, even when the District doesn't need it. The District is willing to pay the extra cost of using regional water only during summer months when it needs it. Using the more expensive piped-in water at peak demand times makes the most sense to the board because bringing in outside water allows overtaxed wells to rest.

The timeframe for the County bringing a regional system to Eldorado's doorstep is currently unknown. And what kind of agreement the District and the County can manage to forge is yet another mystery.

CONTINUED ON FACING PAGE >>>

U.S. Drought Monitor
New Mexico



As of March 2015, Santa Fe County was considered in the zone of Moderate Drought, based on broad-scale conditions. <http://droughtmonitor.unl.edu>



NEIGHBORHOOD WATCH FLORA & FAUNA GROUP

Native Plants

Eldorado is home to a surprisingly wide variety of native plants. Quite a few of them served multiple purposes for the humans who originally resided in the area. We studied *Wild Plants of the Pueblo Province, Exploring Ancient and Enduring Uses* by William W. Dunmire and Gail D. Tierney to better understand the approximately 300 different catalogued plants that were used by prehistoric inhabitants as food, medicines, decorations, building materials, and crafts. A few of the many examples include:

The globe-mallow plant, which has edible fruits, was one of the most widely used plants during the Anasazi era. The Puebloans boiled and added it to gypsum as a glue for house paint, the pulp was mixed with mud to make very hard floors, and the root was pounded and mixed with salt and water to make a healing poultice and to use as a cast for healing broken bones.

Cane cholla (*Opuntia imbricate*) was considered a famine food because its dethorned joints, flower buds, and fruit could be eaten in time of need. High in calcium, cholla buds were commonly consumed in a mush mixed with cornmeal and sometimes a small amount of sugar. Cholla cuttings were planted to make a "living fence," and the plant's woody skeletons were made into walking sticks.

Three-leaf sumac (*Rhus trilobata*), also called "lemonade bush," has acidic berries that can be

crushed and made into a refreshing summertime drink or used for tea. Puebloans ate the leaves of the apache plume (*Fallugia paradoxa*) as an antacid, to prevent stomach gas. The leaves were also steeped in water and used as a shampoo to stimulate hair growth.

Fruit from the yucca plant was a staple, and fibers from the leaves were twisted to create string, used for such things as basketry, belt, ropes, ladders, lashings for sandals, and fish nets. Chamisa (aka rabbitbrush) was used as a colorful dye, the flower buds were eaten, the leaves were made into tea for stomach disorders, and mature limbs were used for arrows and arrowheads.

Both the seeds and the greens of the goosefoot or "lamb's quarters" contain a great deal of nutrition. Prickly pear (*Opuntia*) was used as a dye, and its fruits were eaten—one of the few sweets the Indians enjoyed before Europeans introduced sugar—and is now a popular ingredient in some Santa Fe cuisine.

The buffalo gourd (*Cucurbita foetidissima*) was used as a laxative, a soap, and an effective insect repellent in both homes and gardens. Cocklebur (*Xanthium strumarium*) seeds were ground with cornmeal as a food, the plant was used to treat sores on livestock, and is associated with medicinal uses by native people through the Americas and China.

As we look around our yards and walk on our trails, we will likely encounter plants that the Puebloans were grateful indeed to have at hand.

Contact us at EldoradoFloraFauna@yahoo.com.



Globe mallow flower.
Photo: NPS



Prickly pear (*Opuntia*).

Solid Waste Removal Pilot Program for Eldorado?

This summer, Santa Fe County Board of Commissioners explored the possibility of establishing a franchising system for solid waste removal by creating three districts throughout the county. After extensive deliberations, however, the commissioners abandoned the countywide franchise concept and chose only to mandate that haulers in the county also collect recyclable materials.

Nonetheless, there remains interest in solid waste franchising, and the idea of a pilot program in a smaller area of the county has been suggested. The pilot would include all the basic elements of the original franchise proposal. Residents could choose whether to bring solid waste and recycling to the transfer station on their own or use a private hauler selected by the county through competitive bidding. The county's contract with the selected hauler would require recycling and

would set rates, service levels, frequency of pick-up, and other parameters. Contract details would be shared with residents before the program is launched.

The pilot program would need to run for a minimum of two years in order to allow the selected hauler to recover its costs. At that point, county officials would review the success of the program and make recommendations to the county commissioners.

In many ways, Eldorado would be an appropriate candidate for such a program, if residents are agreeable. Please let us know what you think by emailing gm@eldoradosf.org. For additional information about the program, contact county coordinator Craig O'Hare at 992-3044 or cohare@santafecountynm.gov. Your input is critical in determining whether the ECIA should support this effort.

Dag Ryen, President, ECIA Board of Directors

Santa Fe County will hold a public meeting to discuss this pilot project proposal at the Eldorado Senior Center on November 12, at 6 PM.

Water Matters, *continued*

Much more obvious is that pumping water from aquifers faster than they recharge can't go on forever. Sooner or later, the EAWSD must somehow secure

surface water into its system if it is to continue to provide "clean, safe, and reliable water services to almost 3,000 customer accounts." The question is, "will it be sooner or will it be later?"

—Gershon Siegel

VISTAS

Eldorado Community
Improvement Association
#1 La Hacienda Loop
Santa Fe, New Mexico 87508
www.eldoradosf.org

PRSRT STD
U.S. Postage
PAID
Permit No. 173
Santa Fe, NM



Scan this code with
your phone to take
you to the online
versions of *Vistas*



Scan this code to get
to our online video
about Eldorado by
Jack Arnold

Road Repair (SF County) 992-3010
[www.santafecountynm.gov/public-works/
road_concern](http://www.santafecountynm.gov/public-works/road_concern).

Sheriff 428-3720
Crime Stoppers 955-5050
Neighborhood Watch: <http://eldoradoneighbors.wordpress.com>

ELDORADO/285 RECYCLES

America Recycles Day Events

Join Eldorado/285Recycles on November 3, from 3 to 5 PM at Vista Grande Library to learn about the new recycling guidelines and be entertained at the same time. Why? Because almost everything you always wanted to recycle is now accepted! Also, look for the new flyers available at La Tienda Building B, near the glass bin at the Eldorado Convenience Center, posted at the Agora and online at eldorado/285recycles.org. This is our salute to America Recycles Day, which is November 15.

Also in celebration of American Recycles Day, on November 14 the Solid Waste Management Agency, in conjunction with Keep Santa Fe Beautiful, the City of Santa Fe, and Santa Fe County, will be hosting an Amnesty Day for household hazardous waste (HHW) and old electronics. These items, if not handled properly, could be a risk to the environment. Through the Agency Amnesty Program, residents may dispose of their materials properly and at no charge at the Buckman Road Recycling and Transfer Station between 9 AM and 1 PM.

HHW typically includes things such as paint, pesticides, herbicides, fertilizers, batteries, motor oil, antifreeze, and similar materials. The electronics that the agency accepts for recycling include old computers, printers, scanners, monitors, cables, toner cartridges, and televisions. For more information, contact **Adam Schlachter**, Recycling Education and Outreach Coordinator at aschlachter@sfswwa.org or 424-1850 x 420.

FROM THE SANTA FE COUNTY TREASURER

EAWSD Increases Property Tax in Eldorado District

I'd like to send greetings to all citizens of Eldorado. Property tax season is just around the corner, and I will be sending out the tax bills on October 28 of this year. Citizens of the Eldorado area might see an increase in property taxes. This year the Eldorado Area Water and Sanitation District passed resolution number 16-07-04, which allowed the water and sanitation district to increase its property tax mil levy to a stipulated rate of 4.36, an entire mil higher than last year's 3.36. The resolution was drafted and passed because there was a shortfall in fiscal years 2016 budget. The increase is expected to provide a revenue yield of \$1,199,000 to fill that gap.

I wanted to inform all residents so you are not blindsided. The board approved and passed this resolution on July 16, 2015, months after the assessor's notice of value went out. So, if you're like me and keep track of your notice of value, you will notice that the assessor's estimated taxes for this year will be much less than the actual bill. If there are any questions, my office is always open, so feel free to call at 986-6245 or come to our office on 102 Grant Avenue in downtown Santa Fe.

—Patrick "Pat" Varela, Treasurer, Santa Fe County